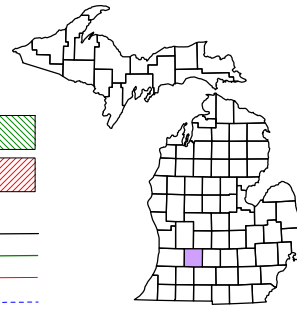


Assyrria Township
T 1 N R 7 W
Barry County
Michigan

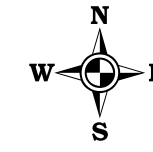
- Gap
- Overlap
- Address
- Real Property
- Personal Property
- Approved Split
- Plat



6	5	4	3	2	1
7	8	9	10	11	12
13	14	15	16	17	18
19	20	21	22	23	24
25	26	27	28	29	30
31	32	33	34	35	36

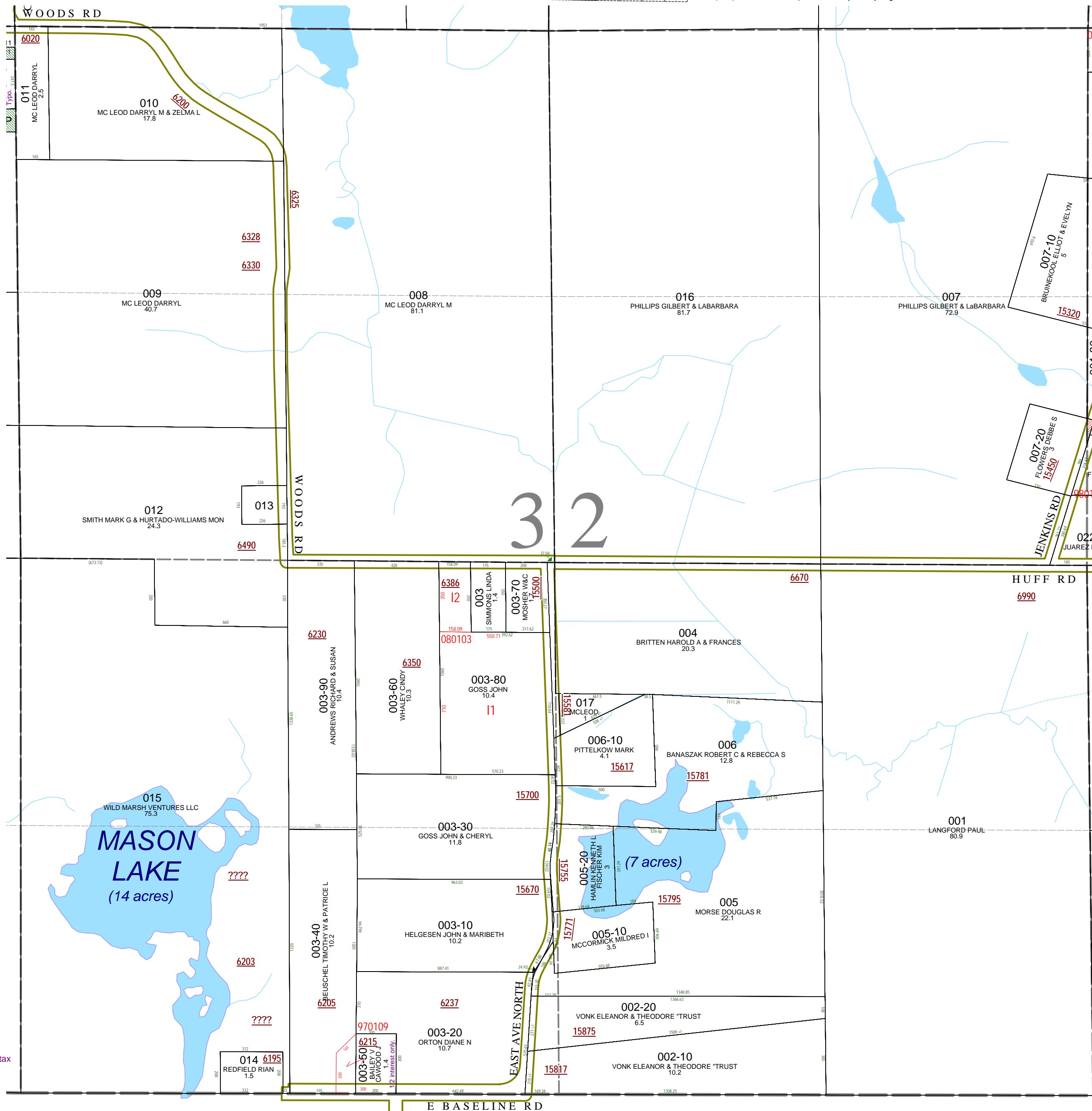
Section 32
08-01-032-
Scale 1"= 400'

This tax map was compiled for tax administration purposes from county and township records. It does not represent a land survey. Barry County Land Information Service 220 West State Street, Hastings MI 49058-4849 (269) 945-1292 or <http://www.barrycounty.org/>



- April 1997
- Revised May 1998
- Revised June 1999
- Revised December 2000
- Revised December 2001
- Revised January 2003
- Revised May 2004
- Revised January 2006
- Revised July 2007
- Revised February 2009

All dimensions are from tax roll unless noted below.
D = deeded M or S = surveyed
SR = Surveyor's Record prior to 1915
GLO = Government Land Office circa. 1830
LCRCR = Land Corner Certificate



08-01-032-003-50 only includes 1/2 interest in tax roll.