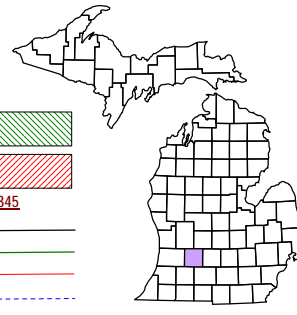


THORNAPPLE	IRVING	CARLTON	WOODLAND
YANKEE SPRINGS	RUTLAND	HASTINGS	CASTLETON
ORANGEVILLE	HOPE	BALTIMOR	MAPLE GROVE
PRAIRIEVILLE	DELTON BARRY	JOHNSTOWN	

Assyria Township T 1 N R 7 W Barry County Michigan

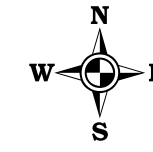
- Gap
- Overlap
- Address
- Real Property
- Personal Property
- Approved Split
- Plat



6	5	4	3	2	1
7	8	9	10	11	12
18	17	16	15	14	13
19	20	21	22	23	24
30	29	28	27	26	25
31	32	33	34	35	36

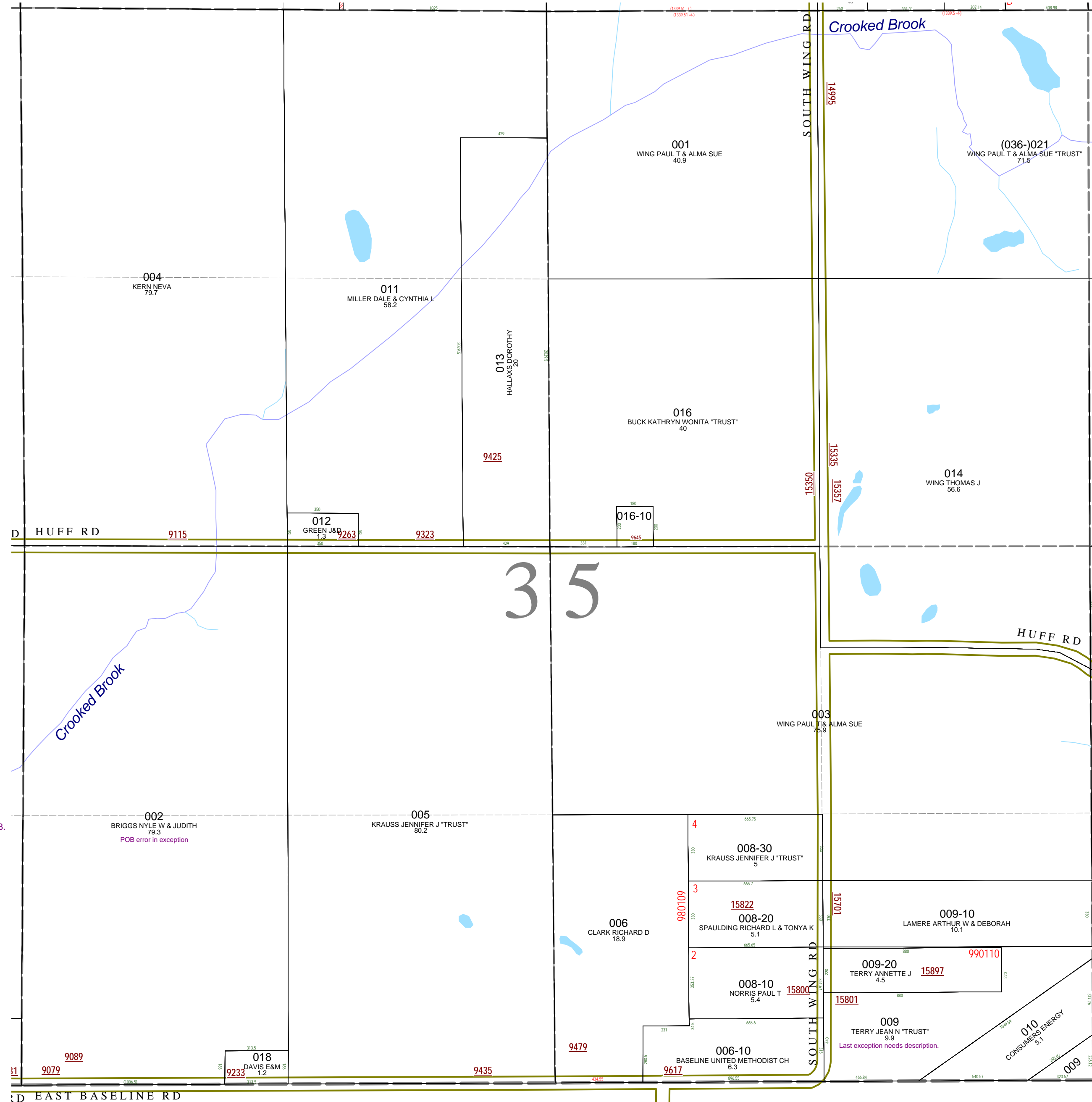
Section 35 08-01-035- Scale 1"= 400'

This tax map was compiled for tax administration purposes from county and township records. It does not represent a land survey.
Barry County Land Information Service
220 West State Street, Hastings MI 49058-4849
(269) 945-1292 or <http://www.barrycounty.org/>



- April 1997
- Revised May 1998
- Revised June 1999
- Revised December 2000
- Revised December 2001
- Revised January 2003
- Revised May 2004
- Revised January 2006
- Revised July 2007
- Revised February 2009

All dimensions are from tax roll unless noted below.
D = deeded M or S = surveyed
SR = Surveyor's Record prior to 1915
GLO = Government Land Office circa. 1830
LCRCR = Land Corner Certificate



08-01-035-002-00 exception does not match exception as described on deed in R#1027423.
POB error in exception

08-01-035-009-00 is missing description of last exception to Consumer's Power.
Last exception needs description.

D EAST BASELINE RD