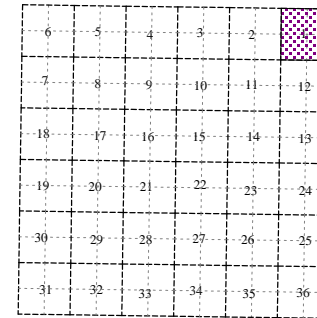
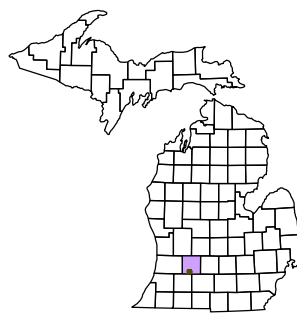
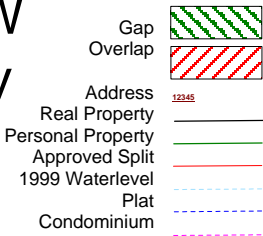


# Barry Township T 1 N R 9 W Barry County Michigan



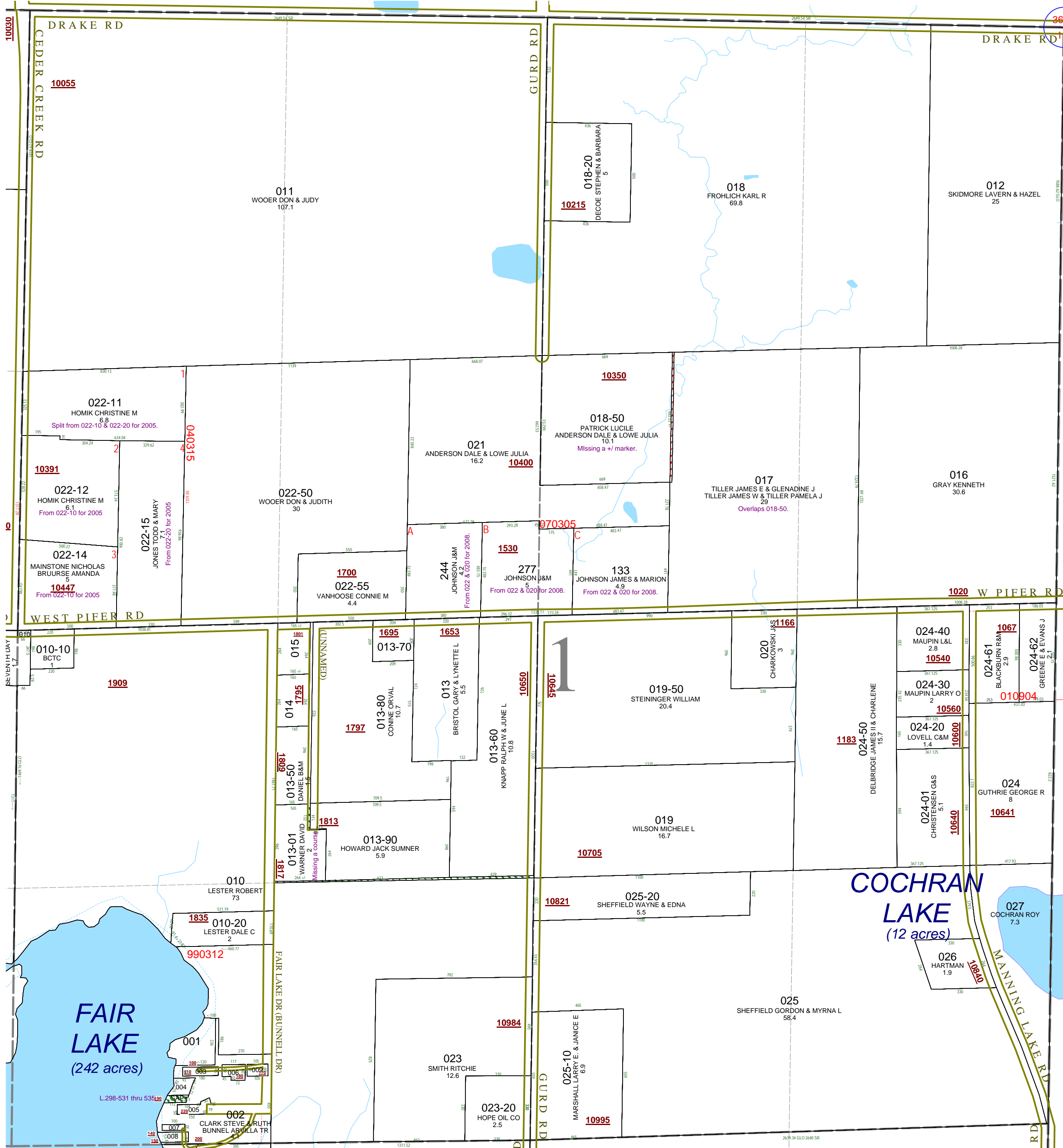
## Section 1 08-03-001- Scale 1"= 400'



This tax map was compiled for tax administration purposes from county and township records. It does not represent a land survey. Barry County Land Information Services 220 West State Street, Hastings MI 49058 (269) 945-1292 or <http://www.barrycounty.org/>

October 1997  
Revised July 1999  
Revised May 2000  
Revised April 2002  
Revised October 2003  
Revised October 2004  
Revised July 2005  
Revised October 2006  
Revised November 2008

All dimensions are from tax roll unless noted below.  
D = deeded M or S = surveyed  
SR = Surveyor's Record prior to 1915  
GLO = Government Land Office circa. 1830



08-03-001-018-50 is missing an important +/-, change "TH N 662.53 FT" to "TH N 662.53FT +/-"

08-03-001-017-00 overlaps 08-03-007-018-50 which was the first parcel partitioned in the chain of title.

08-03-001-013-01 is missing a course, correction reads from original partition deeds L.322-278 & L.368-349.

GAP owned by Reta & Max Keagle in L.298-531 thru 535. Property deeded onto Cook in L.303-565 does not include last parcel. Subsequent deeds do not pick up this parcel. Description would read as last parcel of L.298-533.