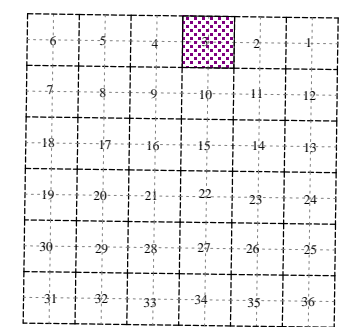
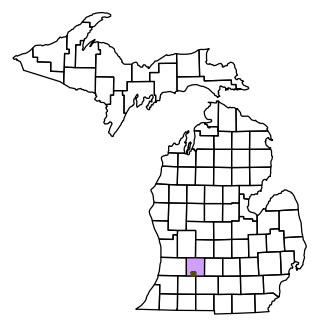


Barry Township T 1 N R 9 W Barry County Michigan

- Gap Overlap
- Address
- Real Property
- Personal Property
- Approved Split
- 1999 Waterlevel
- Plat
- Condominium



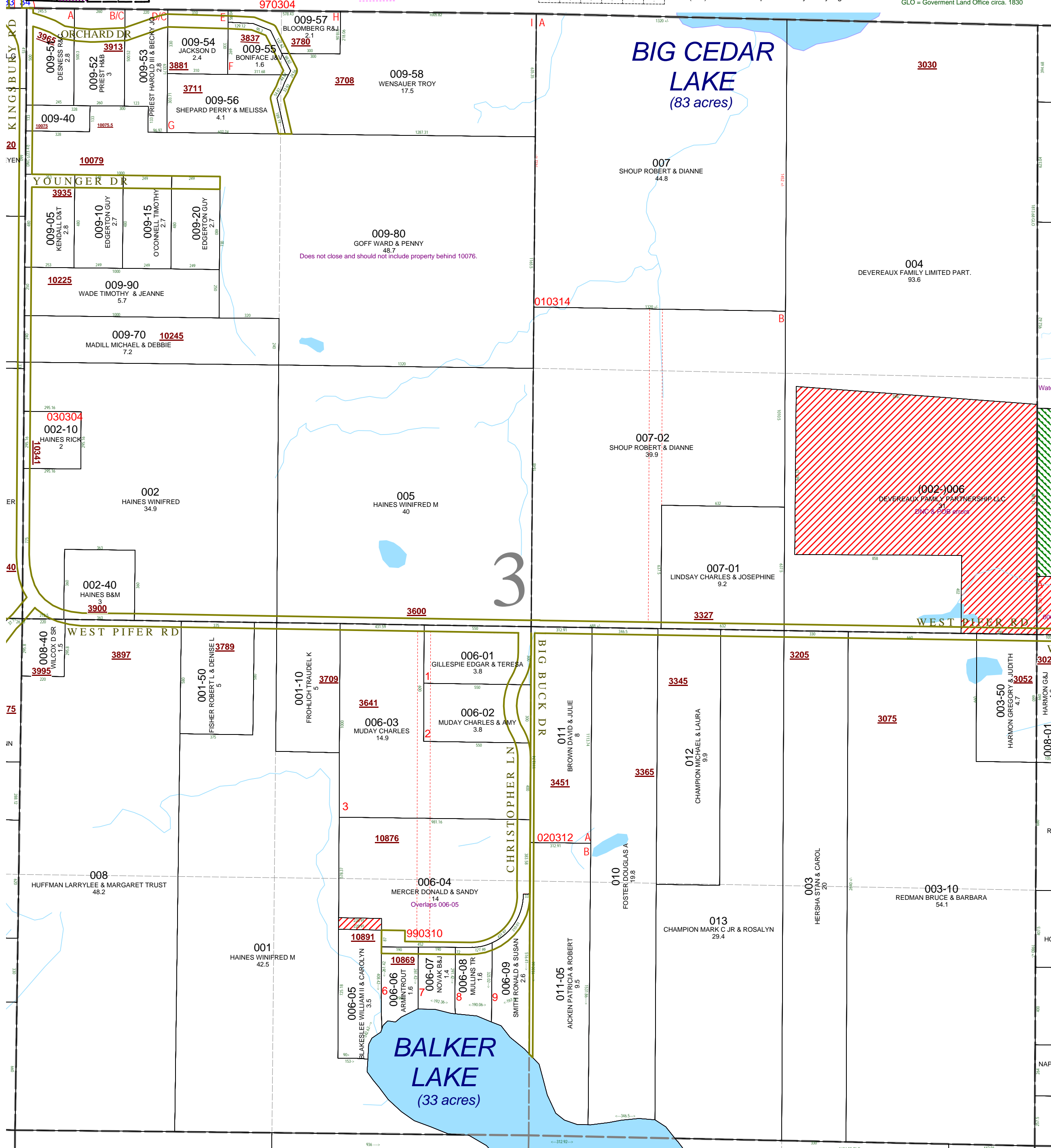
Section 3 08-03-003- Scale 1"= 400'



October 1997
Revised July 1999
Revised May 2000
Revised April 2002
Revised October 2003
Revised October 2004
Revised July 2005
Revised October 2006
Revised November 2008

This tax map was compiled for tax administration purposes from county and township records. It does not represent a land survey. Barry County Land Information Services 220 West State Street, Hastings MI 49058 (269) 945-1292 or <http://www.barrycounty.org/>

All dimensions are from tax roll unless noted below.
D = deeded M or S = surveyed
SR = Surveyor's Record prior to 1915
GLO = Government Land Office circa. 1830



08-03-003-009-80 does not close and should not include second parcel which was not deeded to Goff. That second parcel is owned by Ken E. Tomlin in L.388-70 and was not deeded from Tomlin to Goff or Tomlin to Gay. I think this is the trailer known as 10075 1/2 Kingsbury which is assessed on 009-40 in 2006 but gone in 2008.

08-03-002-006-00 has no point of beginning and does not close shifting the property over into section 3. See R#1135782.

08-03-003-006-04 has a new exception which is on the wrong side, creating an overlap on 006-05.