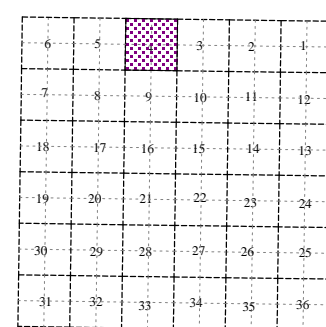
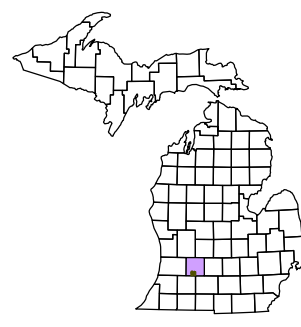
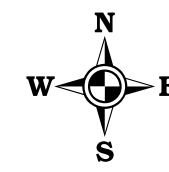


# Barry Township T 1 N R 9 W Barry County Michigan

- Gap Overlap
- Address
- Real Property
- Personal Property
- Approved Split
- 1999 Waterlevel
- Plat
- Condominium



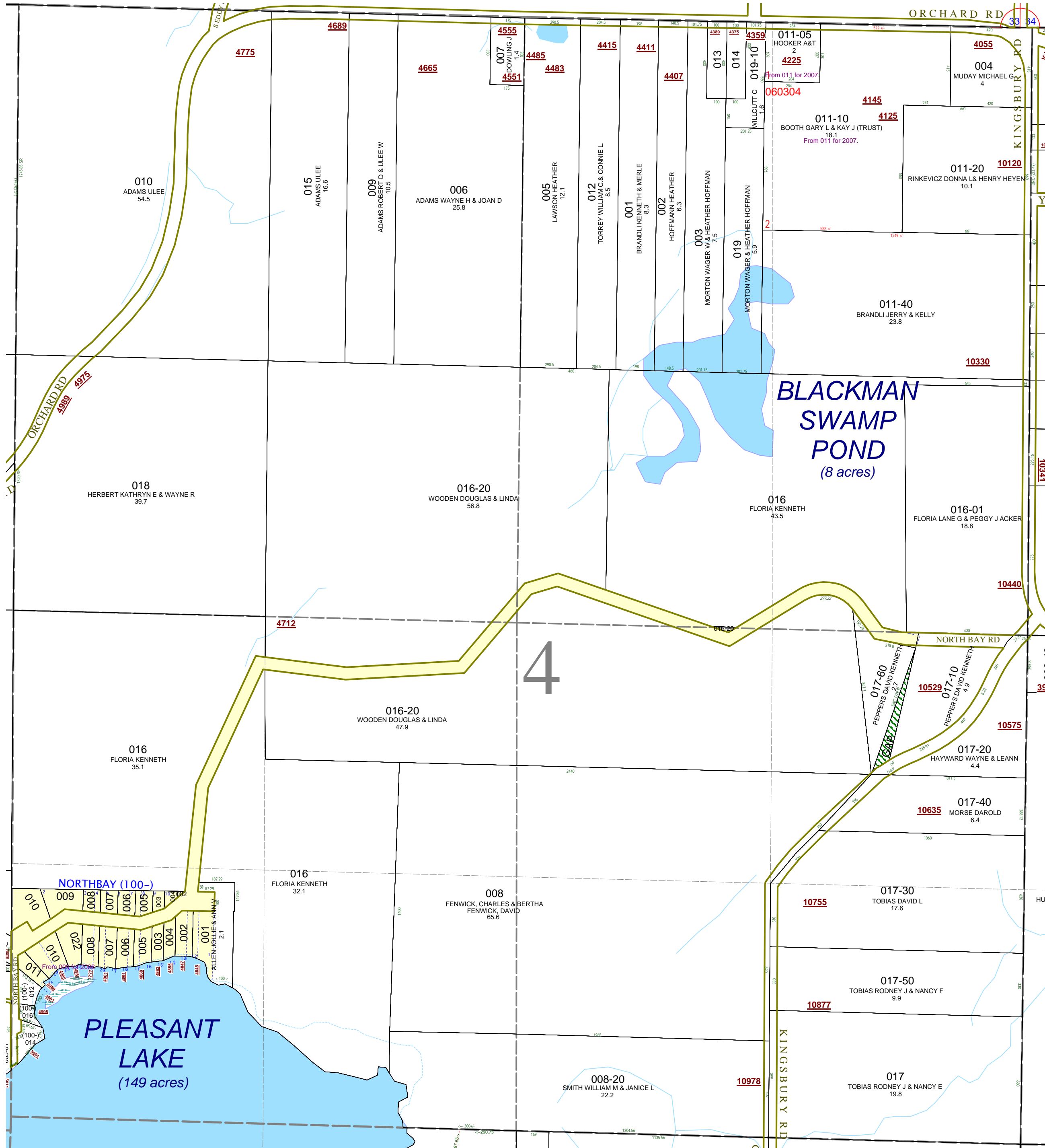
## Section 4 08-03-004- Scale 1" = 400'



October 1997  
Revised July 1999  
Revised May 2000  
Revised April 2002  
Revised October 2003  
Revised October 2004  
Revised July 2005  
Revised October 2006  
Revised November 2008

This tax map was compiled for tax administration purposes from county and township records. It does not represent a land survey.  
Barry County Land Information Services  
220 West State Street, Hastings MI 49058  
(269) 945-1292 or <http://www.barrycounty.org/>

All dimensions are from tax roll unless noted below.  
D = deeded M or S = surveyed  
SR = Surveyor's Record prior to 1915  
GLO = Government Land Office circa. 1830



GAP owned by the Estate of Doris Kokes, Emily J. Winterhalter, personal representative of 1911 Thomas, Berkeley, MI 48072. Title was taken in L.429-685. Because of the relocation of the road the property was not conveyed onto Peppers in L.639-329.