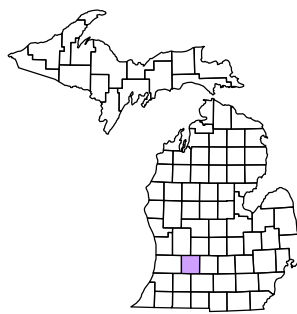


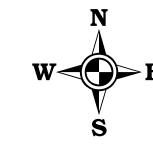
Barry Township  
T 1 N R 9 W  
Barry County  
Michigan

- Gap
- Overlap
- Address
- Real Property
- Personal Property
- Approved Split
- 1999 Waterlevel
- Plat
- Condominium



6	7	8	9	10	11	12
13	14	15	16	17	18	19
20	21	22	23	24	25	26
27	28	29	30	31	32	33
34	35	36	37	38	39	40

NE 1/4 Section 7  
08-03-007-  
Scale 1"= 200'



July 1999  
Revised May 2000  
Revised April 2002  
Revised October 2003  
Revised July 2005  
Revised October 2006  
Revised October 2008

This tax map was compiled for tax administration purposes from county and township records. It does not represent a land survey.  
Barry County Land Information Services  
220 West State Street, Hastings MI 49058  
(269) 945-1292 or <http://www.barrycounty.org/>

All dimensions are from tax roll unless noted below.  
D = deeded M or S = surveyed  
SR = Surveyor's Record prior to 1915  
GLO = Government Land Office circa. 1830

08-03-006-038-00 overlaps 03-007-017-50 and is in two pieces in two separate sections.

08-03-007-017-50 needs to exclude part retained by McCormick on sale to Langerveld parcel #5 of R#1104188 and include triangle piece from parcel #4 and exclude parcel underneath shed.

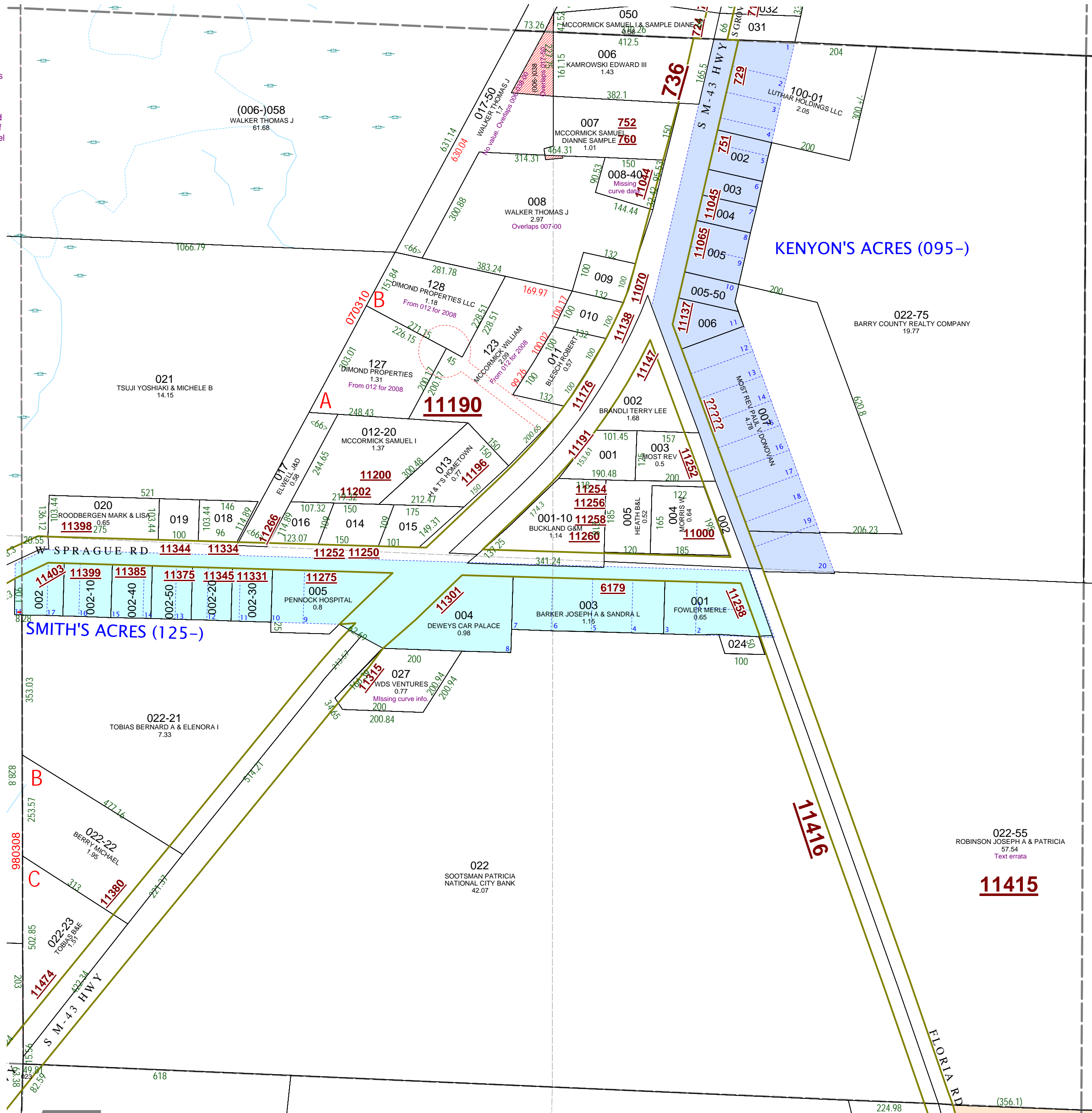
08-03-007-007-00 second description does not close. See R#1104188 for parcel #4.

08-03-007-008-40 needs to include curve data.

08-03-007-008-00 needs to exclude parcel not sold on to Langerveld/Walker on land contract underneath the shed.

08-03-007-027-00 is missing the word "radius" after the curve information.

08-03-007-022-55 has stray text at the end of the description.



022-55  
ROBINSON JOSEPH A & PATRICIA  
57.54  
Text errata

**11415**