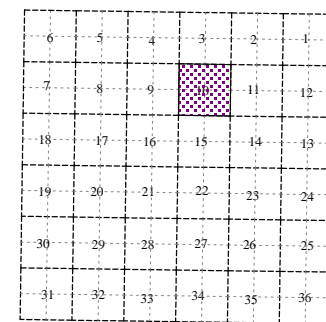
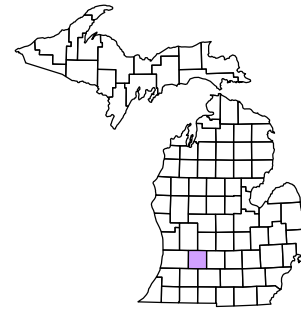


Barry Township
T 1 N R 9 W
Barry County
Michigan

Legend:

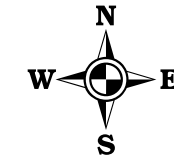
- Gap Overlap (Green hatched)
- Address (Red line)
- Real Property (Blue line)
- Personal Property (Green line)
- Approved Split (Red dashed line)
- 1999 Waterlevel (Blue dashed line)
- Plat (Blue dashed line)
- Condominium (Purple dashed line)



Section 10
08-03-010-

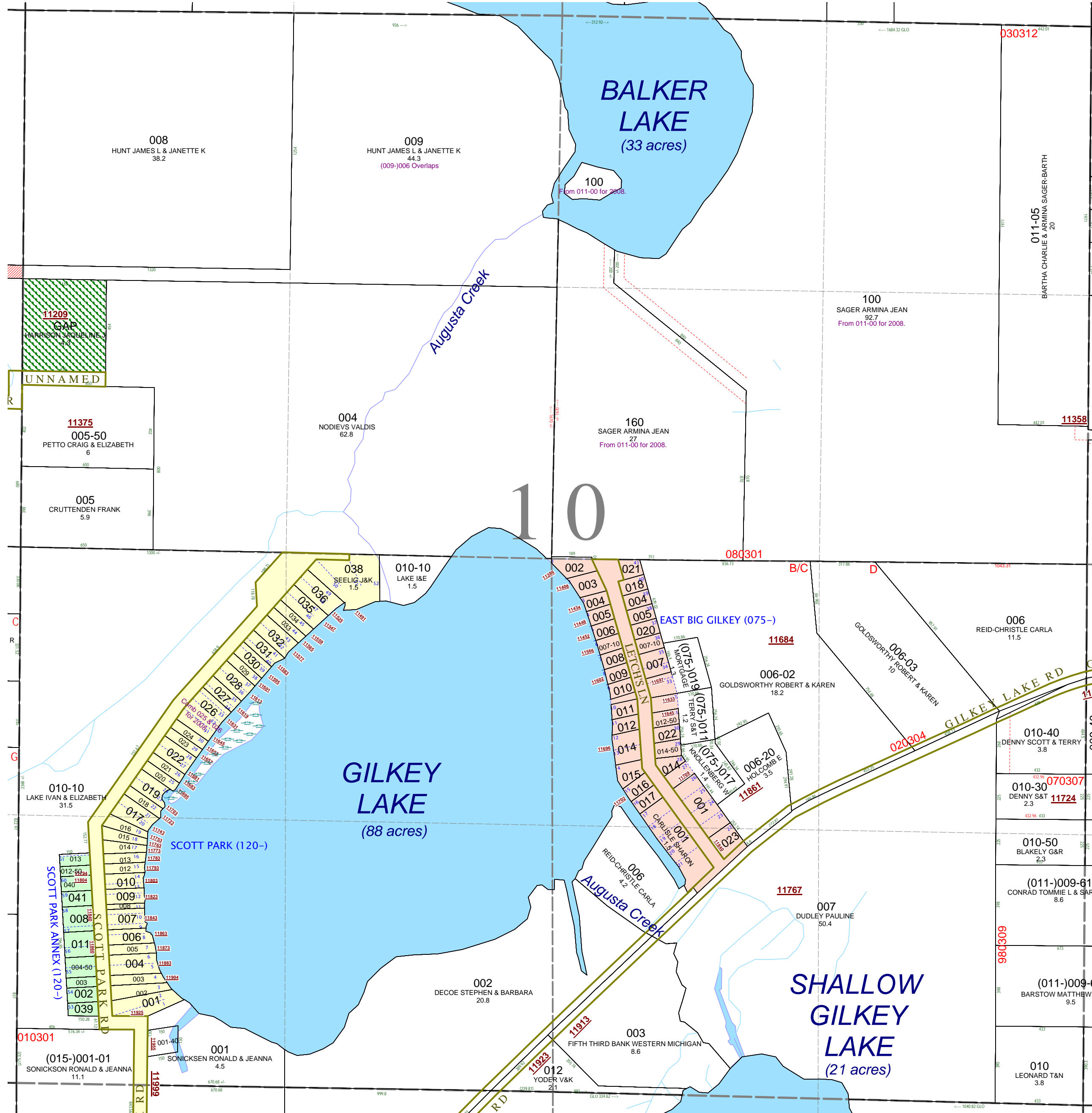
Scale 1" = 400'

This tax map was compiled for tax administration purposes from county and township records. It does not represent a land survey. Barry County Land Information Services, 220 West State Street, Hastings MI 49058 (269) 945-1292 or <http://www.barrycounty.org/>



October 1997
Revised July 1999
Revised May 2000
Revised April 2002
Revised October 2003
Revised October 2004
Revised July 2005
Revised October 2006
Revised November 2008

All dimensions are from tax roll unless noted below.
D = deeded M or S = surveyed
SR = Surveyor's Record prior to 1915
GLO = Government Land Office circa. 1830



08-03-010-100-00 has an error, the measure of 1670 should be 1670 +/-.

08-03-010-160-00 has an error, the measure of 1670 should be 1670 +/-.

08-03-010-007-00 needs to specify natural watercourse of Augusta Creek rather than dredged channel.