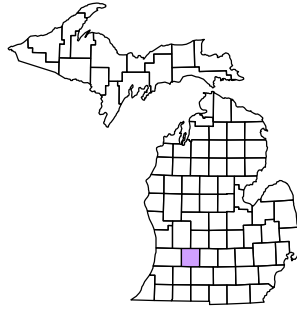


Barry Township
T 1 N R 9 W
Barry County
Michigan

- Gap
- Overlap
- Address
- Real Property
- Personal Property
- Approved Split
- 1999 Waterlevel
- Plat
- Condominium



6	5	4	3	2	1
7	8	9	10	11	12
13	14	15	16	17	18
19	20	21	22	23	24
25	26	27	28	29	30
31	32	33	34	35	36

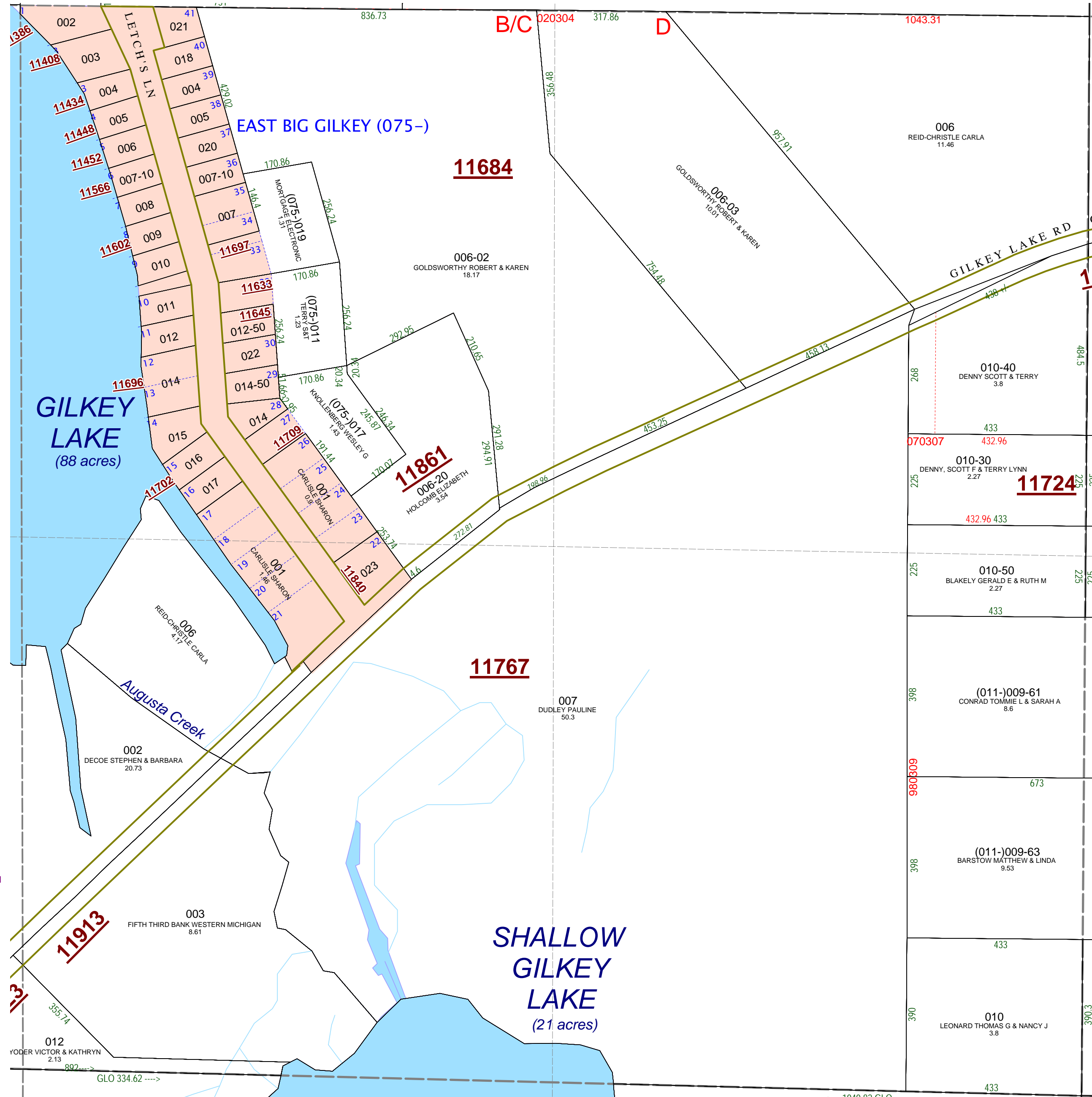
SE 1/4 Section 10
08-03-010-
Scale 1" = 200'



July 1999
Revised October 2003
Revised October 2004
Revised July 2005
Revised October 2006
Revised November 2008

This tax map was compiled for tax administration purposes from county and township records. It does not represent a land survey. Barry County Land Information Services 220 West State Street, Hastings MI 48058 (269) 945-1292 or <http://www.barrycounty.org/>

All dimensions are from tax roll unless noted below.
D = deeded M or S = surveyed
SR = Surveyor's Record prior to 1915
GLO = Government Land Office circa. 1830



08-03-010-010-30 has been surveyed for split #070307 and needs to include easement.

08-03-010-007-00 needs to specify natural watercourse of Augusta Creek rather than dredged channel.