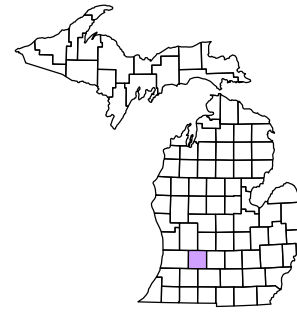


Barry Township  
T 1 N R 9 W  
Barry County  
Michigan

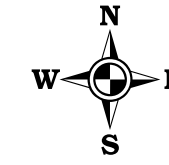
Legend:

- Gap Overlap (Green hatched)
- Address (Red line)
- Real Property (Blue line)
- Personal Property (Green line)
- Approved Split (Red line)
- 1999 Waterlevel (Blue line)
- Plat (Dashed line)
- Condominium (Purple line)



6	5	4	3	2	1
7	8	9	10	11	12
13	14	15	16	17	18
19	20	21	22	23	24
25	26	27	28	29	30
31	32	33	34	35	36

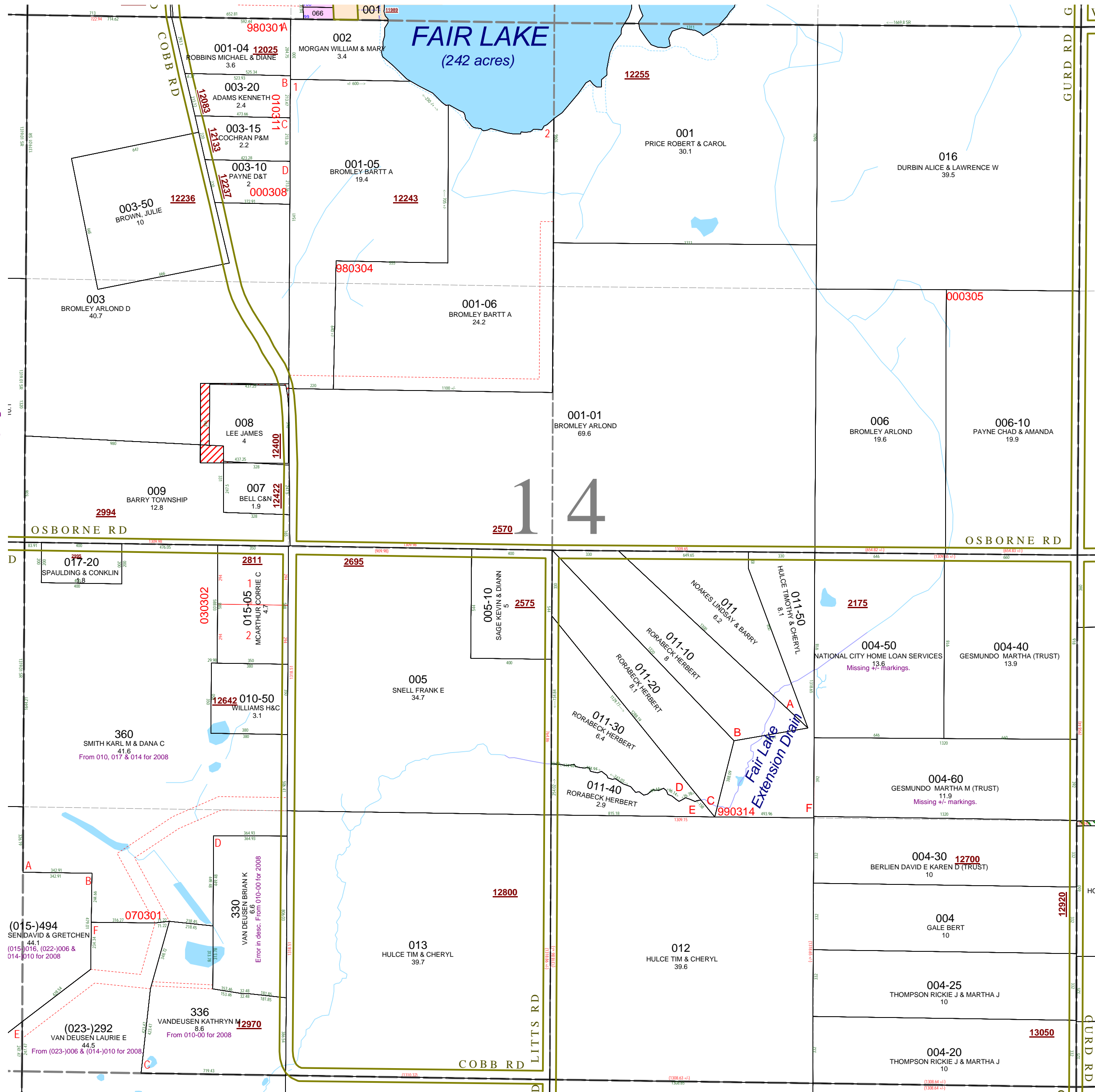
Section 14  
08-03-014-  
Scale 1"= 400'



October 1997  
Revised July 1999  
Revised May 2000  
Revised April 2002  
Revised October 2003  
Revised October 2004  
Revised July 2005  
Revised October 2006  
Revised November 2008

This tax map was compiled for tax administration purposes from county and township records. It does not represent a land survey.  
Barry County Land Information Services  
220 West State Street, Hastings MI 49058  
(269) 945-1292 or <http://www.barrycounty.org/>

All dimensions are from tax roll unless noted below.  
D = deeded M or S = surveyed  
SR = Surveyor's Record prior to 1915  
GLO = Government Land Office circa. 1830



08-03-014-003-00 has one incorrect measure, change "980FT" to "924FT +/-".

08-03-014-008-00 overlaps 003-00, 009 & 007. The whole W 1/2 NW 1/4 was owned by Goodwin Inc. In September 1956 he deeded off L.250-54 to the Barry County Road Commission and L.251-327 to Sager (now Bell). In Feb 1957 he deeded off L.252-72 to Urfer subject to LC to Bromley. The final deed to Geraldine Goodwin (now Lee) of Feb 1957 (recorded in 1966) overlaps all prior descriptions and makes an unspecified exception of a small dwelling house and hay barn. This parcel needs a survey.

08-03-014-004-50 is missing its "+/-" markings and should read as deed in R#1169740.

08-03-014-004-60 should include the "+/-" marking from original deed in L.647-586