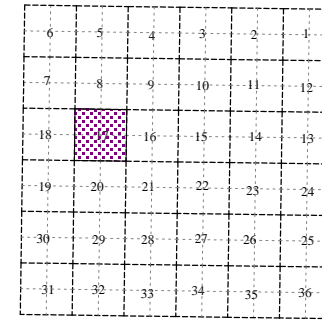
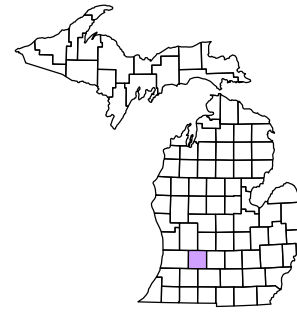
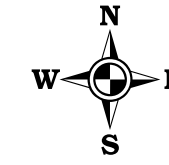


Barry Township
T 1 N R 9 W
Barry County
Michigan

- Gap
- Overlap
- Address
- Real Property
- Personal Property
- Approved Split
- 1999 Waterlevel
- Plat
- Condominium



Section 17
08-03-017-
Scale 1"= 400'



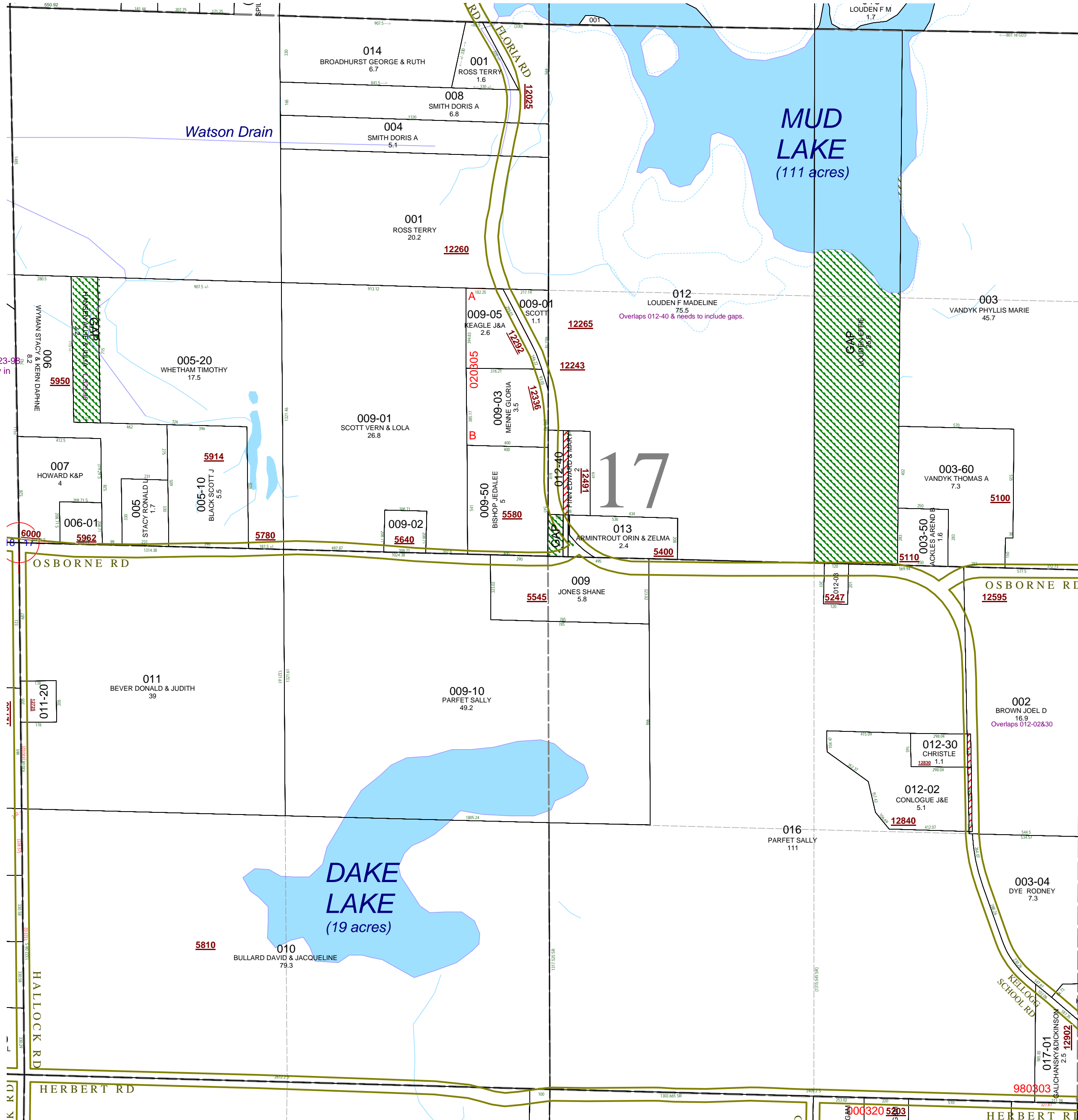
October 1997
Revised July 1999
Revised May 2000
Revised April 2002
Revised October 2003
Revised October 2004
Revised July 2005
Revised October 2006
Revised November 2008

This tax map was compiled for tax administration purposes from county and township records. It does not represent a land survey. Barry County Land Information Services 220 West State Street, Hastings MI 49058 (269) 945-1292 or <http://www.barrycounty.org/>

All dimensions are from tax roll unless noted below.
D = deeded M or S = surveyed
SR = Surveyor's Record prior to 1915
GLO = Government Land Office circa. 1830

08-03-017-008-00 does not close because property lines don't exactly follow the road

GAP owned by Allie & Julia Hansen in L.323-98 less sales to Wyman in L.389-908 & Bailey in L.377-866.



08-03-017-012-00 overlaps 012-40 and needs to include two gap parcels.

08-03-017-002-00 overlaps 012-02 & 012-30 and is a known overlap due to change in centerline or mis-measurement of location of centerline of Kellogg School Rd.

17

980803