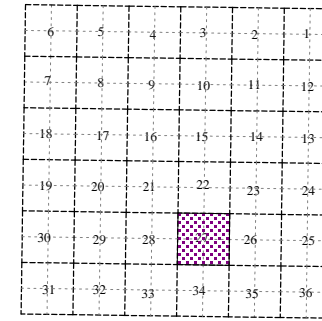
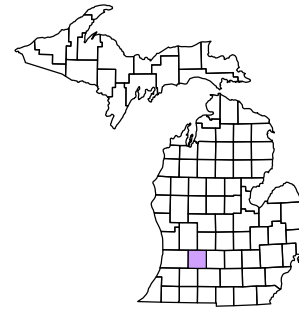
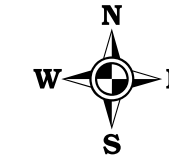


Barry Township  
T 1 N R 9 W  
Barry County  
Michigan

- Gap Overlap
- Address
- Real Property
- Personal Property
- Approved Split
- 1999 Waterlevel
- Plat
- Condominium



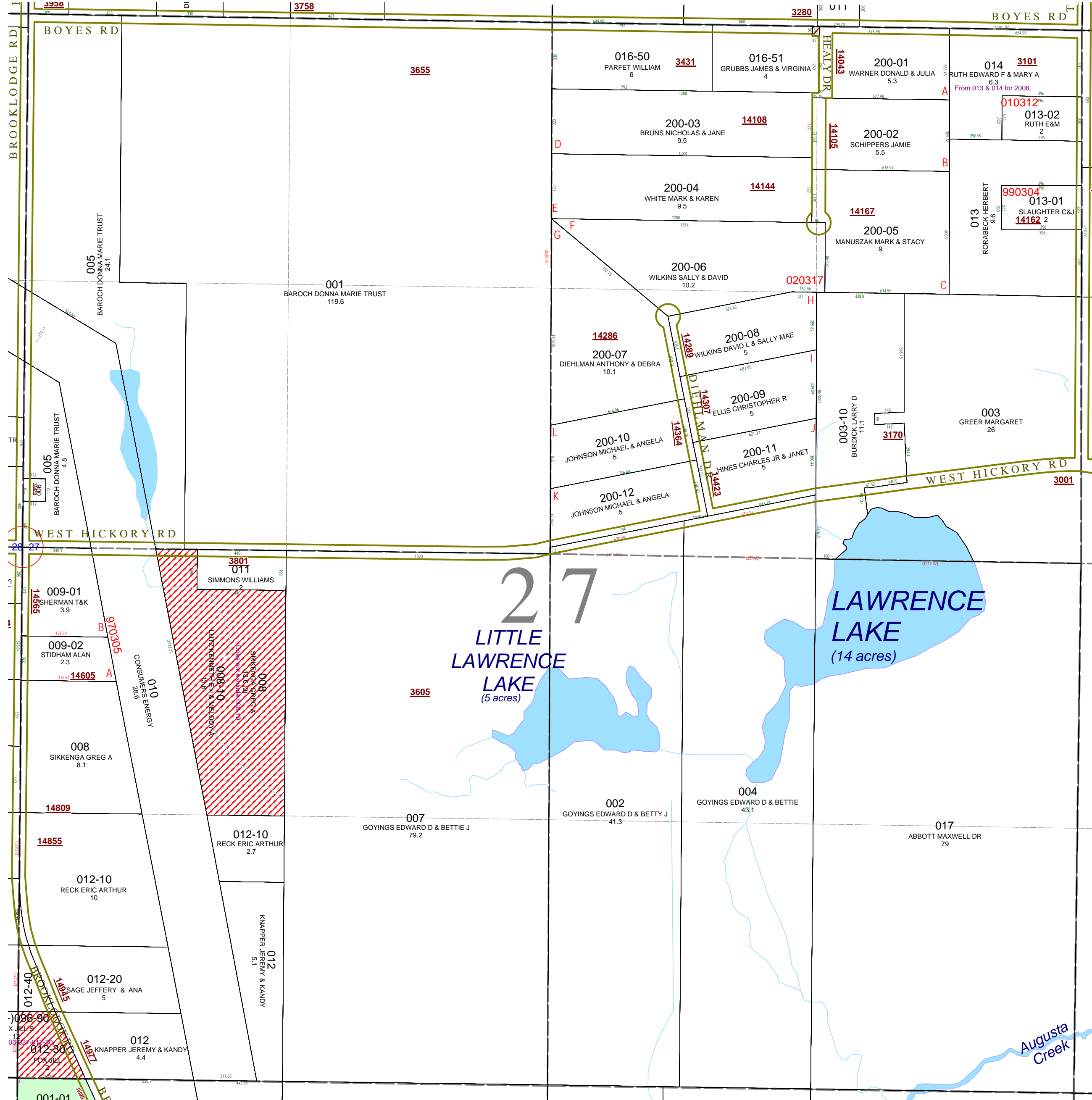
Section 27  
08-03-027-  
Scale 1" = 400'



October 1997  
Revised July 1999  
Revised May 2000  
Revised April 2002  
Revised October 2003  
Revised October 2004  
Revised July 2005  
Revised October 2006  
Revised November 2008

This tax map was compiled for tax administration purposes from county and township records. It does not represent a land survey. Barry County Land Information Services 220 West State Street, Hastings MI 49058 (269) 945-1292 or <http://www.barrycounty.org/>

All dimensions are from tax roll unless noted below.  
D = deeded M or S = surveyed  
SR = Surveyor's Record prior to 1915  
GLO = Government Land Office circa. 1930



08-03-027-008-00 does not exclude 008-10 and should have power line exception spelled out.

08-03-027-008-10 needs to describe the location of the 311 foot wide power line strip.

08-03-027-016-51 overlaps 08-03-027-200-01 up in its northeast corner.

08-03-027-014-00 should indicate the measurement of 258.99 to be 258.99 +/- because the survey does not specify this distance and it is only an estimate.

27  
LITTLE LAWRENCE LAKE  
(5 acres)

LAWRENCE LAKE  
(14 acres)

Augusta Creek