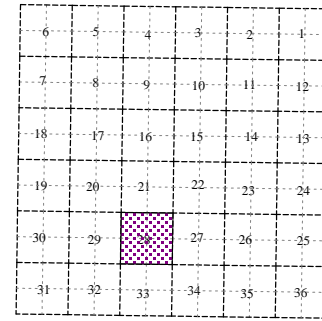
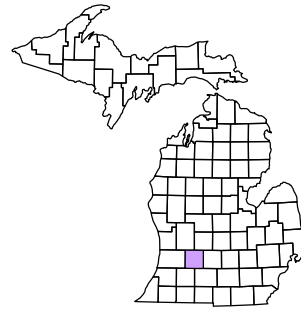


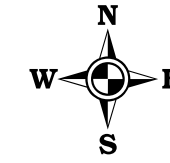
Barry Township T 1 N R 9 W Barry County Michigan

- Gap Overlap
- Address
- Real Property
- Personal Property
- Approved Split
- 1999 Waterlevel
- Plat
- Condominium



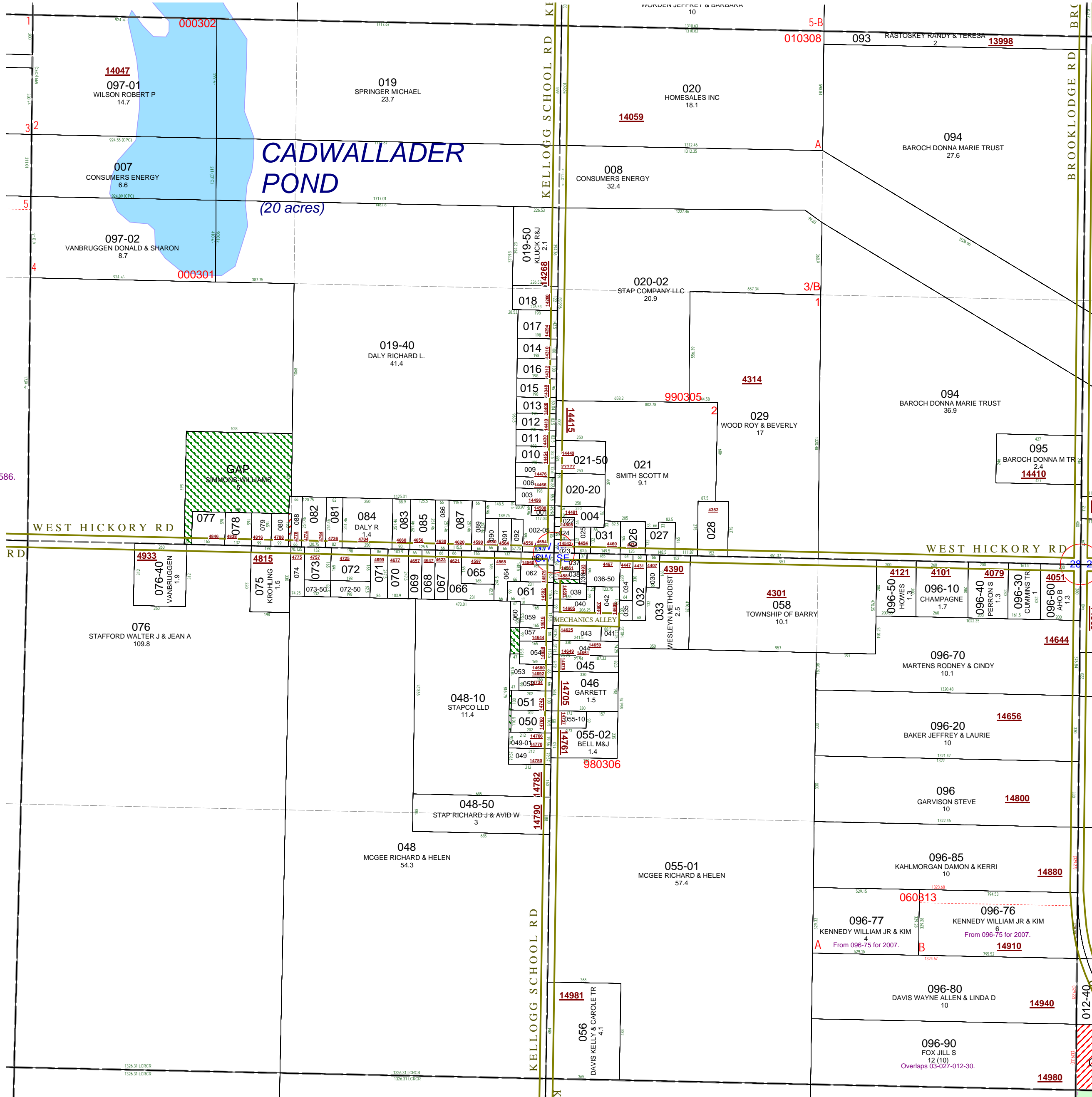
Section 28 08-03-028- Scale 1" = 400'

This tax map was compiled for tax administration purposes from county and township records. It does not represent a land survey. Barry County Land Information Services 220 West State Street, Hastings MI 49058 (269) 945-1292 or <http://www.barrycounty.org/>



October 1997
Revised July 1999
Revised May 2000
Revised April 2002
Revised October 2003
Revised October 2004
Revised July 2005
Revised October 2006
Revised November 2008

All dimensions are from tax roll unless noted below. D = deeded M or S = surveyed SR = Surveyor's Record prior to 1915 GLO = Government Land Office circa. 1830



GAP in NW of Sec 28 owned by Simmons-Williams American Legion Post #484 in L.313-586.

08-03-028-008-00 overlaps 088 and needs to exclude overlap parcel as described on deed #20080819-0008362.

GAP in SW of Sec 28, conveyed by a blanket deed to Richard & Helen McGee in L.481-287.

GAP in SE of Sec 28 owned by the Estate of Howard Wertland in L.173-438.

08-03-028-039-00 does not close on two courses. See R#1173177.

08-03-028-096-90 overlaps 08-03-027-012-30