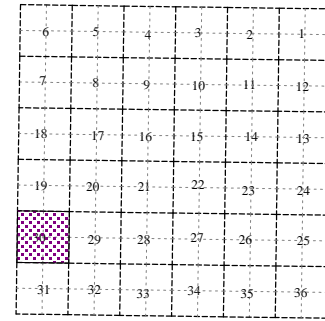
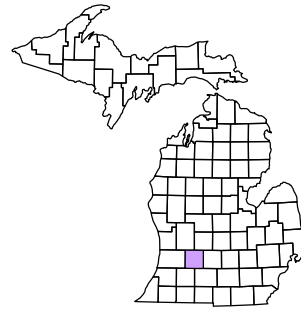


Barry Township
T 1 N R 9 W
Barry County
Michigan

- Gap Overlap
- Address
- Real Property
- Personal Property
- Approved Split
- 1999 Waterlevel
- Plat
- Condominium



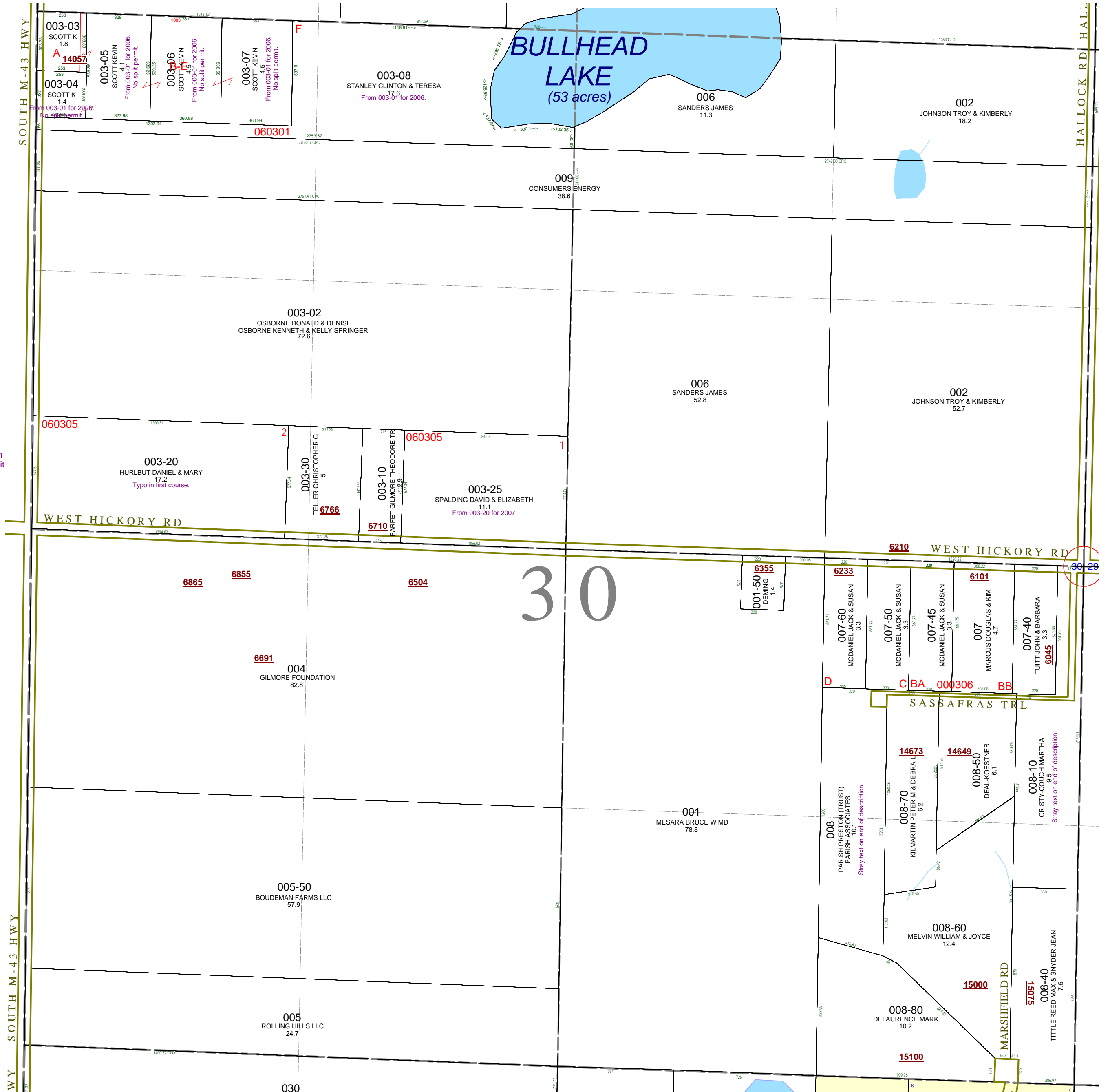
Section 30
08-03-030-
Scale 1" = 400'



October 1997
Revised July 1999
Revised May 2000
Revised April 2002
Revised October 2003
Revised October 2004
Revised July 2005
Revised October 2006
Revised November 2008

This tax map was compiled for tax administration purposes from county and township records. It does not represent a land survey.
Barry County Land Information Services
220 West State Street, Hastings MI 49058
(269) 945-1292 or <http://www.barrycounty.org/>

All dimensions are from tax roll unless noted below.
D = deeded M or S = surveyed
SR = Surveyor's Record prior to 1915
GLO = Government Land Office circa. 1830



08-03-030-003-20 has a "R" instead of a "5" in the first course and has been surveyed for split #060305.

08-03-030-008-00 has stray text on the end of the description.

08-03-030-008-10 has stray text on the end of the description.