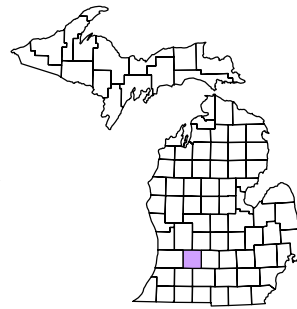


Carlton Township  
T 4 N R 8 W  
Barry County  
Michigan

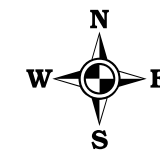
- Address 12345
- Gap
- Overlap
- Real Property
- Personal Property
- Approved Split
- Plat
- Condominium
- Mobile Home Park



1	2	3	4	5	6
7	8	9	10	11	12
13	14	15	16	17	18
19	20	21	22	23	24
25	26	27	28	29	30
31	32	33	34	35	36

Section 5  
08-04-005-  
Scale 1" = 400'

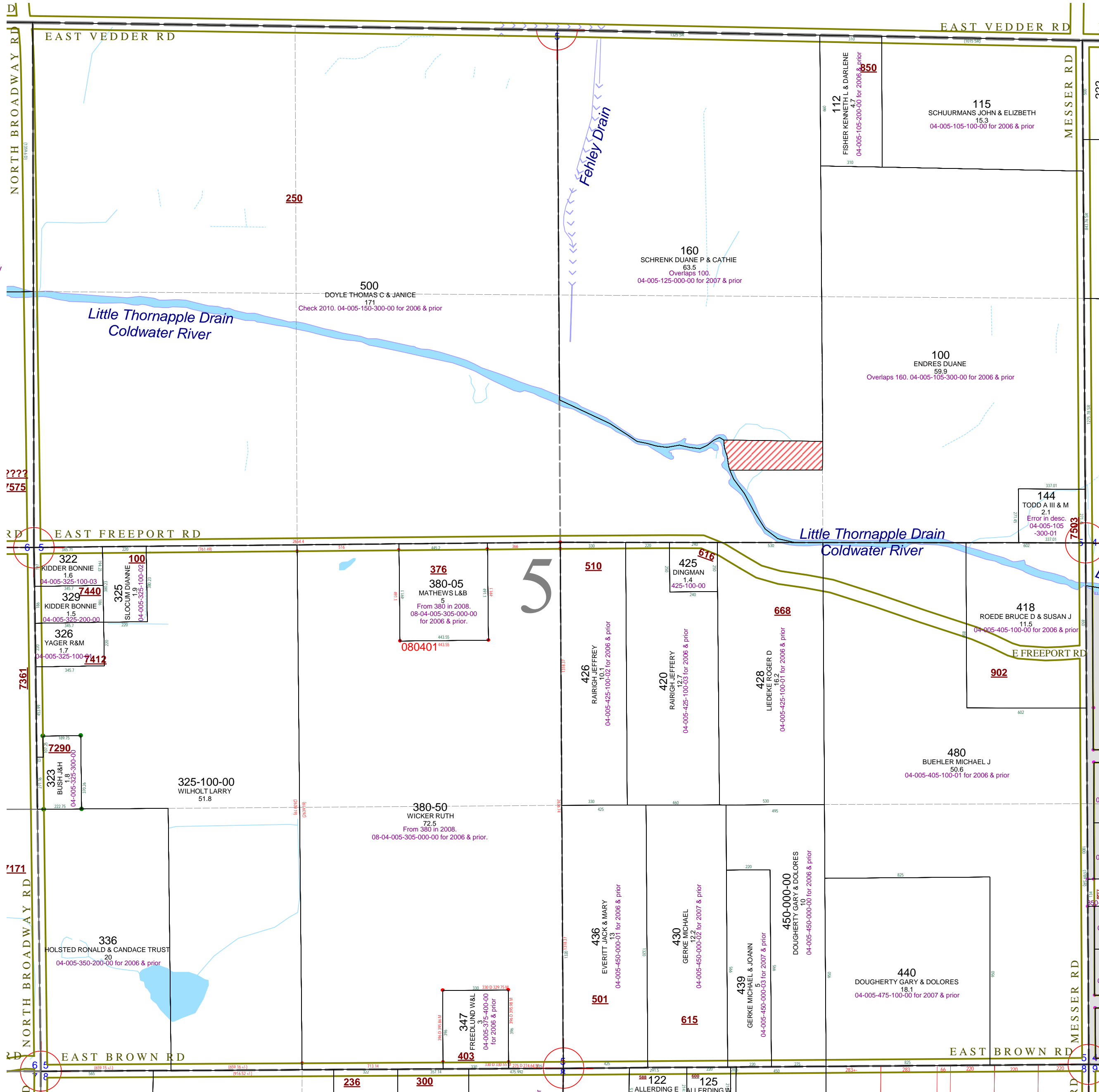
This tax map was compiled for tax administration purposes from county and township records. It does not represent a land survey. Barry County Land Information Services 220 West State Street, Hastings MI 49058 (269) 945-1292 or <http://www.barrycounty.org/>



December 1997  
Revised March 2000  
Revised June 2001  
Revised April 2003  
Revised July 2004  
Revised May 2005  
Revised August 2006  
Revised March 2007  
Revised October 2008  
Revised August 2009

All dimensions are from tax roll unless noted below.  
D = deduced M or S = surveyed  
SR = Surveyor's Record prior to 1915  
GLO = Government Land Office circa 1930

08-04-005-500-00 needs to include wedge parcel from relocation of Broadway Road as surveyed by Reynolds for split to Kuperus in #20090731-0007881.



08-04-005-160-00 overlaps 100-00. These property description where generated prior to the straightening and relocation of the Coldwater River for the Little Thornapple Drain. There is a cutoff loop of the old river which is the old property line

08-04-005-100-00 overlaps 160-00. These property description where generated prior to the straightening and relocation of the Coldwater River for the Little Thornapple Drain. There is a cutoff loop of the old river which is the actual property line, but it must be designated as such by the tax roll. Also the exception of 144 is rotated 90 degrees.

08-04-005-144-00 is rotated 90 degrees. See L.620-744.

236 300 122 125 ALLERDING W. ALLERDING W.