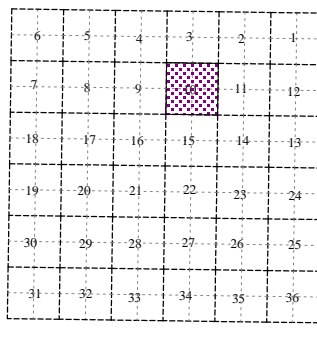
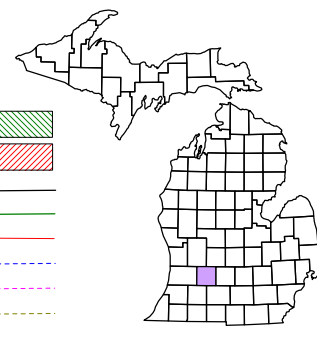
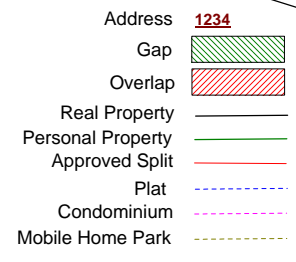


Castleton Township T 3 N R 7 W Barry County Michigan



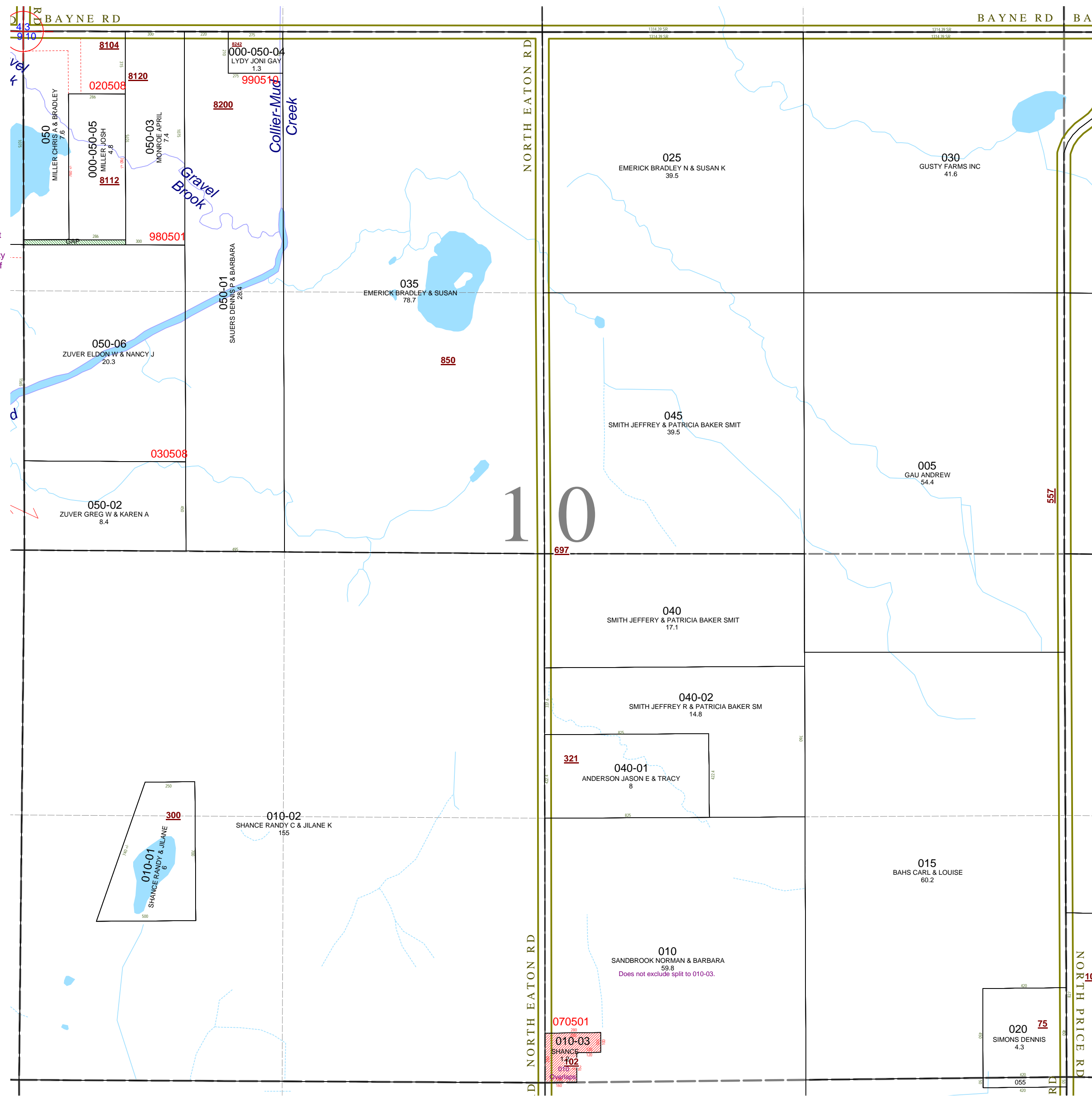
Section 10 08-05-010-

For tax years 2005 & prior parcel numbers had leading "000" after section unless otherwise noted.
 Scale 1" = 400'
 This tax map was compiled for tax administration purposes from county and township records. It does not represent a land survey.
 Barry County Land Information Services
 220 West State Street, Hastings MI 49058
 (269) 945-1292 or <http://www.barrycounty.org/>



October 1997
 Revised October 1999
 Revised February 2001
 Revised January 2003
 Revised June 2004
 Revised May 2005
 Revised February 2007
 Revised January 2009

All dimensions are from tax roll unless noted below.
 D = deeded M or S = surveyed
 SR = Surveyor's Record prior to 1915
 GLO = Government Land Office circa. 1830



GAP created by changing the description of the exception of Zuver's property from what was deeded to Dunn in R#1046591 to what came out as an exception to Miller in R#1040650. A product of a short section and bad math. Property then would still be titled to Clark Miller survivor of Helen Miller.

08-05-010-00 does not exclude new split to 010-03.