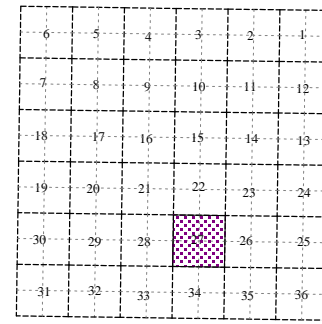
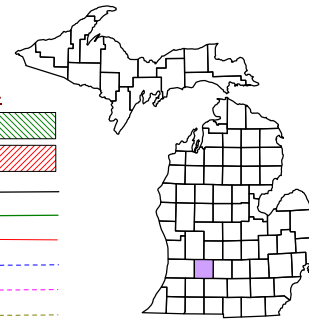


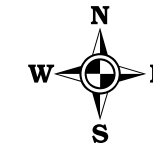
Castleton Township
T 3 N R 7 W
Barry County
Michigan

- Address 1234
- Gap
- Overlap
- Real Property
- Personal Property
- Approved Split
- Plat
- Condominium
- Mobile Home Park



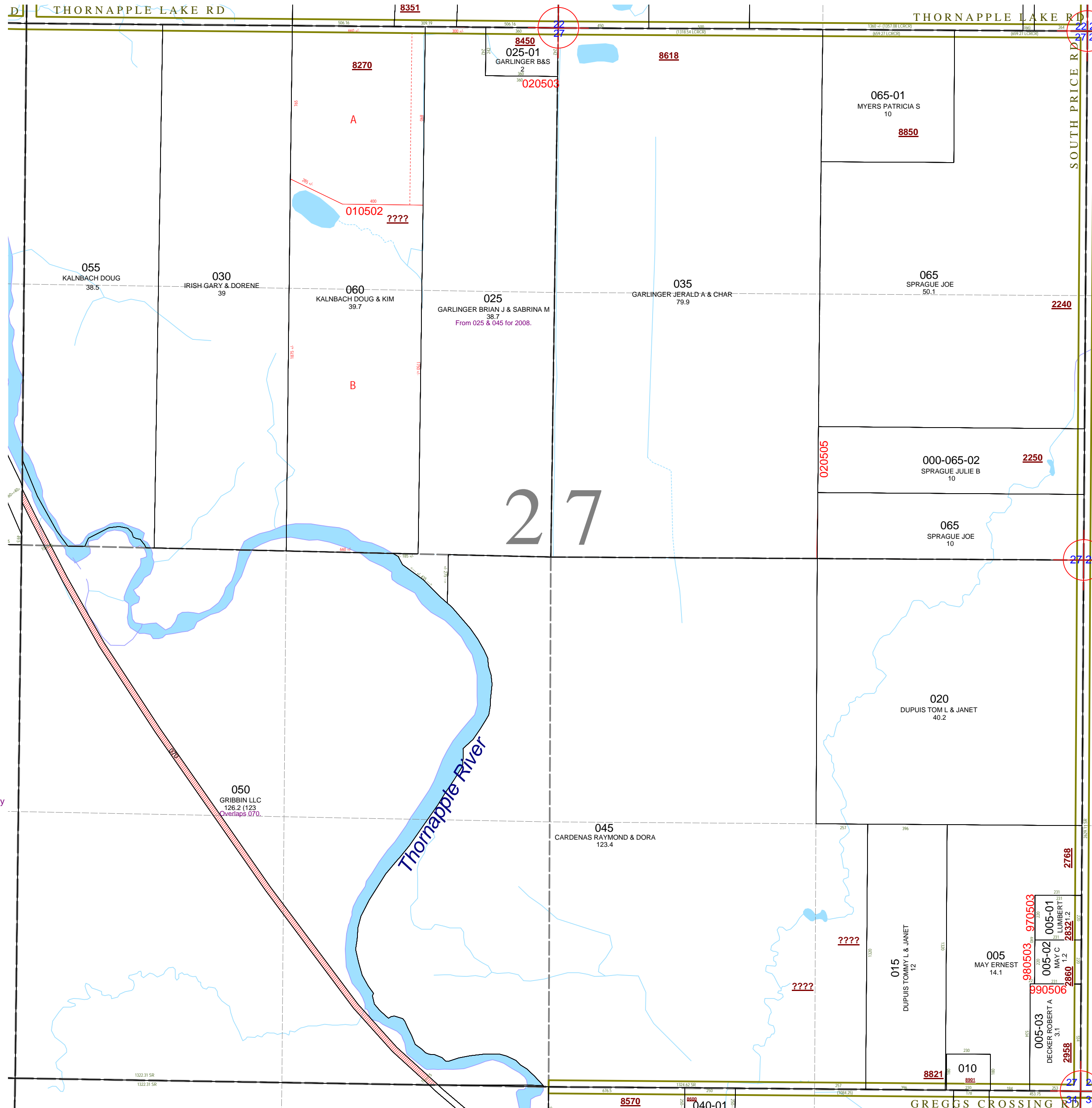
Section 27
08-05-027-

Scale 1"= 400'
This tax map was compiled for tax administration purposes from county and township records. It does not represent a land survey.
Barry County Land Information Services
220 West State Street, Hastings MI 49058
(269) 945-1292 or <http://www.barrycounty.org/>



October 1997
Revised October 1999
Revised February 2001
Revised January 2003
Revised June 2004
Revised May 2005
Revised February 2007
Revised January 2009

All dimensions are from tax roll unless noted below.
D = dedeed M or S = surveyed
SR = Surveyor's Record prior to 1915
GLO = Government Land Office circa. 1830



08-05-027-050-00 overlaps 070 because it has dropped the exception of the former RR property now held by Barry County.