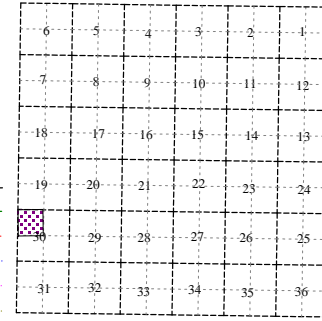


Castleton Township  
T 3 N R 7 W  
Barry County  
Michigan

- Address 1234
- Gap
- Overlap
- Real Property
- Personal Property
- Approved Split
- Plat
- Condominium
- Mobile Home Park

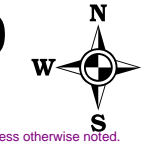


NW 1/4 Section 30  
08-05-030-

For tax years 2005 & prior parcel numbers had leading "000" after section unless otherwise noted.

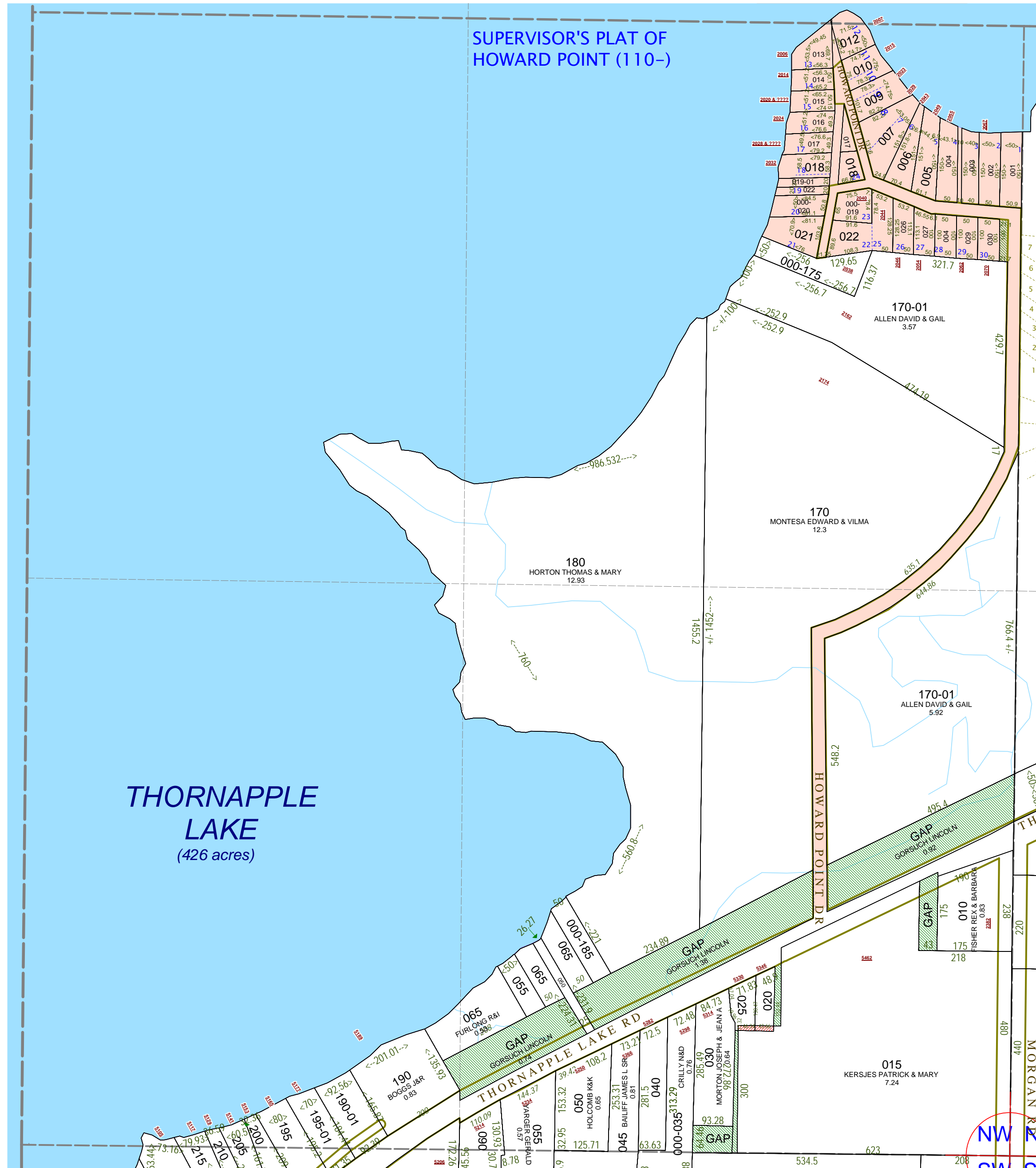
Scale 1" = 200'

This tax map was compiled for tax administration purposes from county and township records. It does not represent a land survey. Barry County Land Information Services 220 West State Street, Hastings MI 49058 (269) 945-1292 or <http://www.barrycounty.org/>



- October 1999
- Revised February 2001
- Revised January 2003
- Revised June 2004
- Revised May 2005
- Revised February 2007
- Revised January 2009

All dimensions are from tax roll unless noted below.  
D = dedeed M or S = surveyed  
SR = Surveyor's Record prior to 1915  
GLO = Government Land Office circa. 1830



GAP between 010 & 015 owned by Fay Fisher in L.304-484.  
GAP which is former GVRR owned by Lincoln Gorsuch in L.614-683.

GAP south of 030 owned by Janet Lee Diskin in L.441-41 and not sold to Eaton in L.441-42.