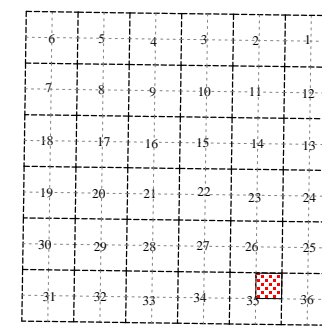
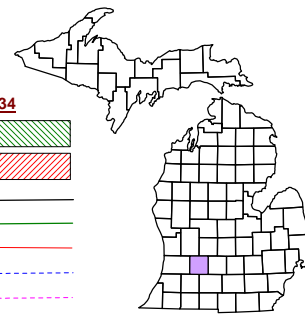


Village of Nashville  
T 3 N R 7 W  
Barry County  
Michigan  
Sheet 4

- Address 1234
- Gap
- Overlap
- Real Property
- Personal Property
- Approved Split
- Plat
- Condominium
- Mobile Home Park



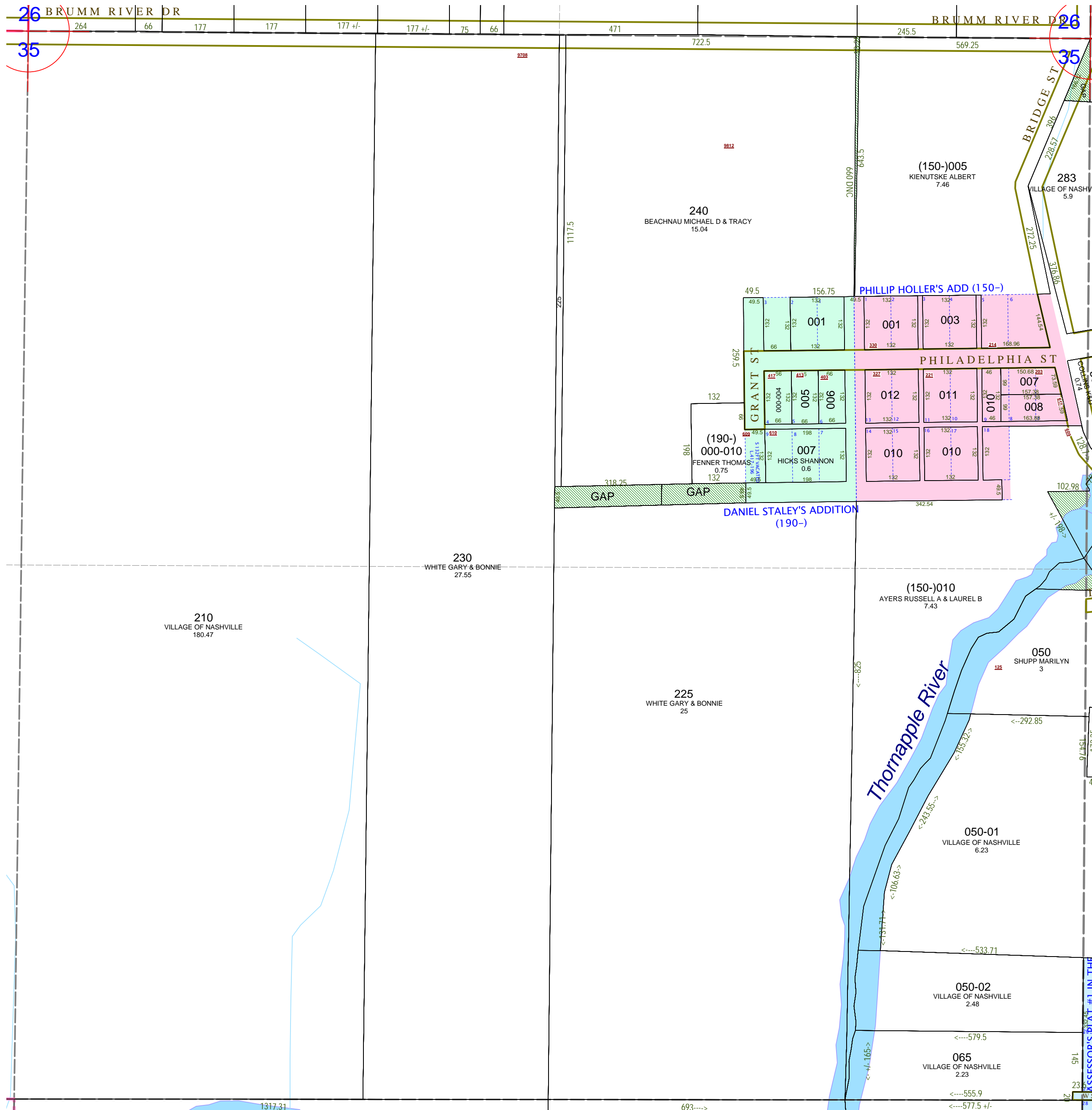
NE 1/4 Section 35  
08-52-002-

Scale 1" = 200'  
This tax map was compiled for tax administration purposes from county and township records. It does not represent a land survey.  
Barry County Land Information Services  
220 West State Street, Hastings MI 49058  
(269) 945-1292 or <http://www.barrycounty.org/>



October 1997  
Revised October 1999  
Revised February 2001  
Revised January 2003  
Revised June 2004  
Revised May 2005  
Revised February 2007  
Revised January 2009

All dimensions are from tax roll unless noted below.  
D = deeded M or S = surveyed  
SR = Surveyor's Record prior to 1915  
GLO = Government Land Office circa. 1830



GAP in NE corner Sec 35 owned by Mallett, Mallett, & Johnson in L.4-83, L.4-185 & L.4-186.

GAP adjacent to Daniel Staley's Addition owned by Daniel Staley in L.33-416.

GAP adjacent to east 1/8 line owned by James Staley in L.33-414

GAP which is the west footing of the dam for the Village of Nashville

GAP properties south of the dam with electric lines for Village of Nashville.

ASSESSOR'S PLAT # 1 IN THE