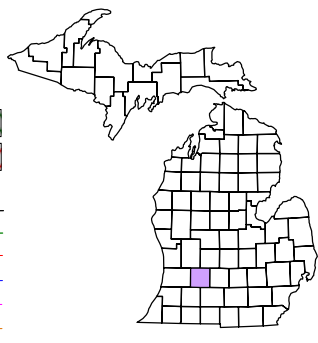


Hope Township
T 2 N R 9 W
Barry County
Michigan

- Gap
- Overlap
- Address
- Real Property
- Personal Property
- Approved Split
- Plat
- Condominium
- Mobile Home Park



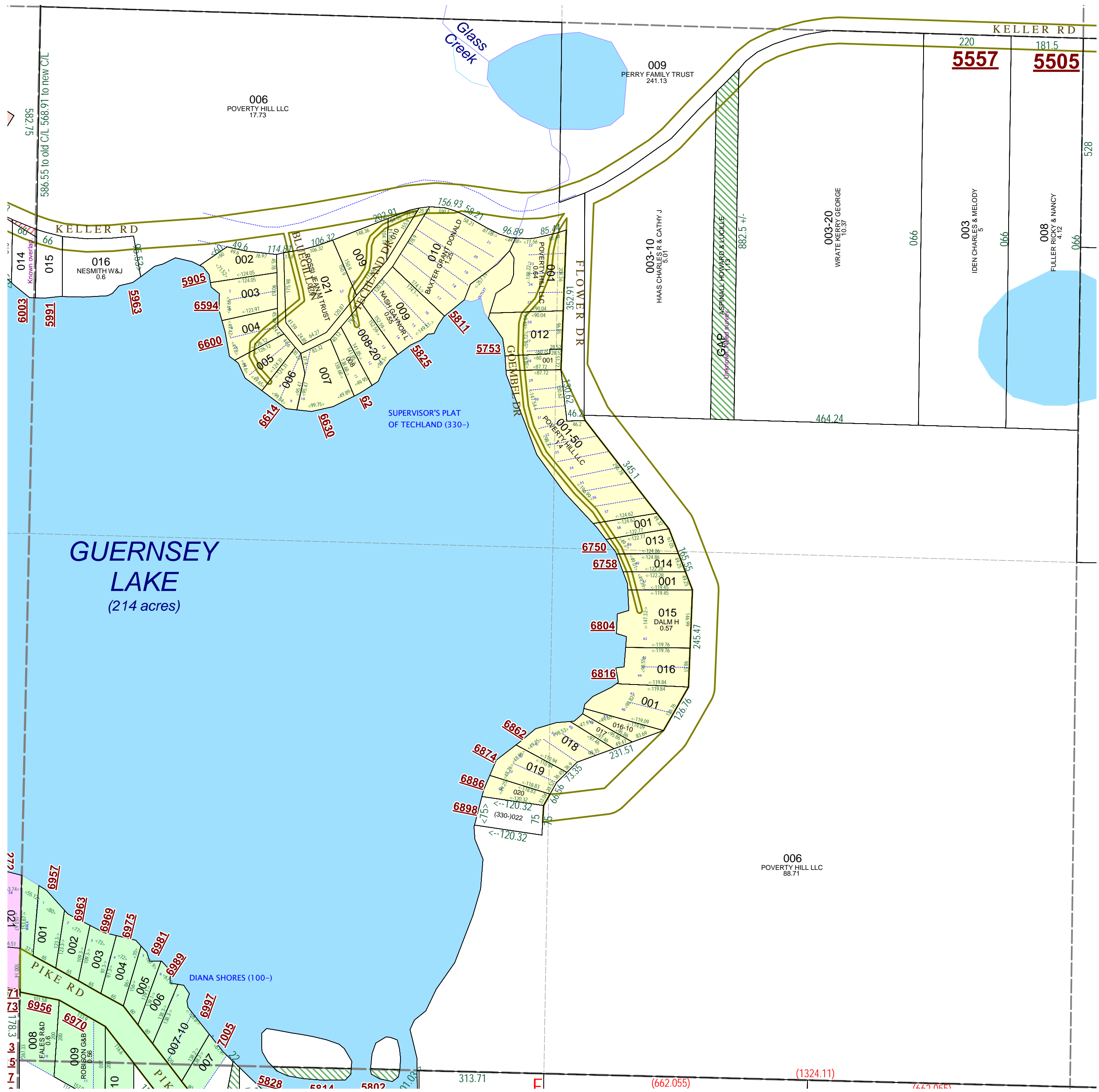
6	5	4	3	2	1
7	8	9	10	11	12
18	17	16	15	14	13
19	20	21	22	23	24
30	29	28	27	26	25
31	32	33	34	35	36

SW 1/4 Section 17
08-07-017-
Scale 1"= 200'



May 1999
Revised November 2000
Revised October 2002
Revised January 2004
Revised September 2004
Revised November 2005
Revised August 2006
Revised July 2007
Revised August 2009
All dimensions are from tax roll unless noted below.
D = deeded M or S = surveyed
SR = Surveyor's Record prior to 1915
GLO = General Land Office circa. 1830

This tax map was compiled for tax administration purposes from county and township records. It does not represent a land survey. Barry County Land Information Services 220 West State Street, Hastings MI 49058 (269) 945-1292 or <http://www.barrycounty.org/>



GAP owned by Howard D. (deceased L.421-283) & Lucille Aspinall in L.266-482 in a deed from Perry. Not sold on in L.359-594 to Cutler or L.508-264 to Pummil. Looks like they duplicated an exception by subtracting 4 rods from the original 69 rods of the parcel and then also saying "except the west 4 rods" leaving approximately 66 feet as a gap