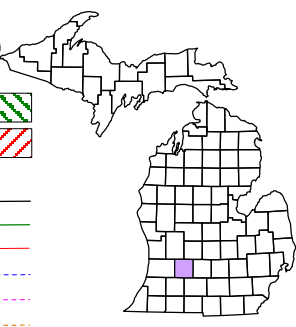


Maple Grove Township  
T 2 N R 7 W  
Barry County  
Michigan

- Gap
- Overlap
- Address
- Real Property
- Personal Property
- Approved Split
- Plat
- Condominium
- Mobile Home Park



6	5	4	3	2	1
7	8	9	10	11	12
18	17	16	15	14	13
19	20	21	22	23	24
30	29	28	27	26	25
31	32	33	34	35	36

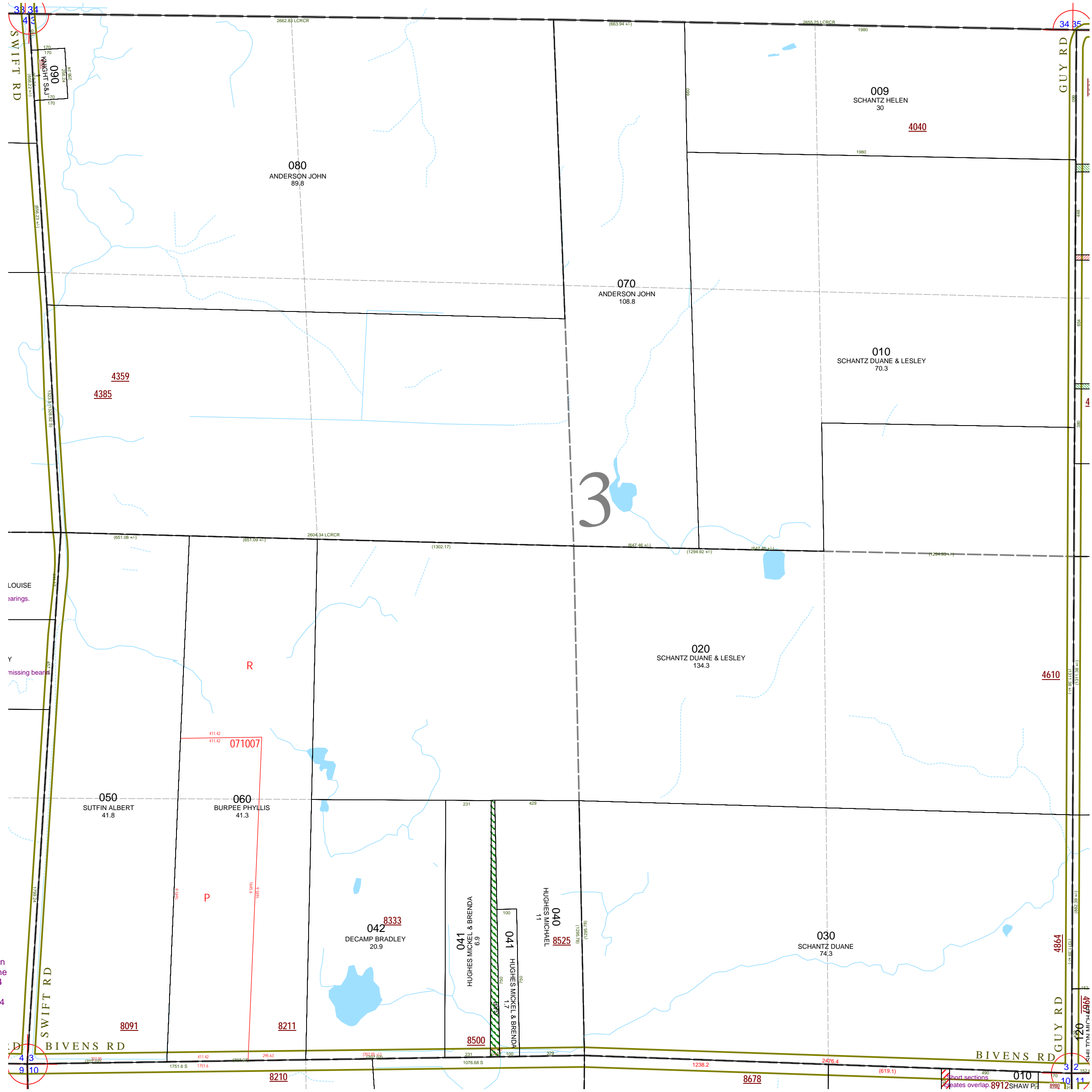
Section 3  
08-10-003-  
Scale 1"= 400'



December 1997  
Revised February 2000  
Revised December 2001  
Revised March 2003  
Revised June 2004  
Revised June 2006  
Revised February 2008

This tax map was compiled for tax administration purposes from county and township records. It does not represent a land survey. Barry County Land Information Services 220 West State Street, Hastings MI 49058 (269) 945-1292 or <http://www.barrycounty.org/>

All dimensions are from tax roll unless noted below.  
D = deeded M or S = surveyed  
SR = Surveyor's Record prior to 1915  
GLO = Government Land Office circa. 1830



GAP owned by Arden & Sydonna Schantz and not deeded to Hughes in L.561-177 and Martin in R#1005044. This gap arises from the fact that the distance between the S 1/4 post and the SW 1/4 post are surveyed at 2826.28 feet. This makes the distance on the south line of the E 1/2 SE 1/4 SW 1/4 to be 707.07 feet. Which leaves 47.07 feet unaccounted for.

Short sections creates overlap: 8912 SHAW P.