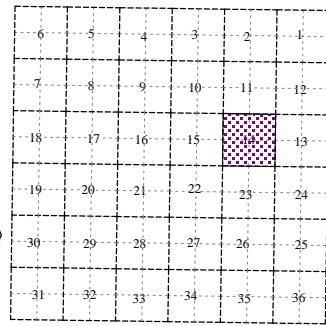
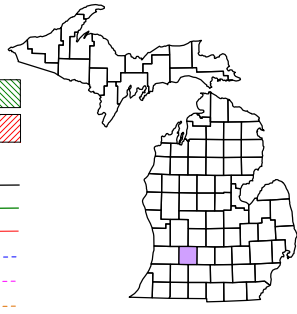


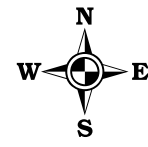
Maple Grove Township
T 2 N R 7 W
Barry County
Michigan

- Gap █
- Overlap █
- Address █
- Real Property █
- Personal Property █
- Approved Split █
- Plat █
- Condominium █
- Mobile Home Park █



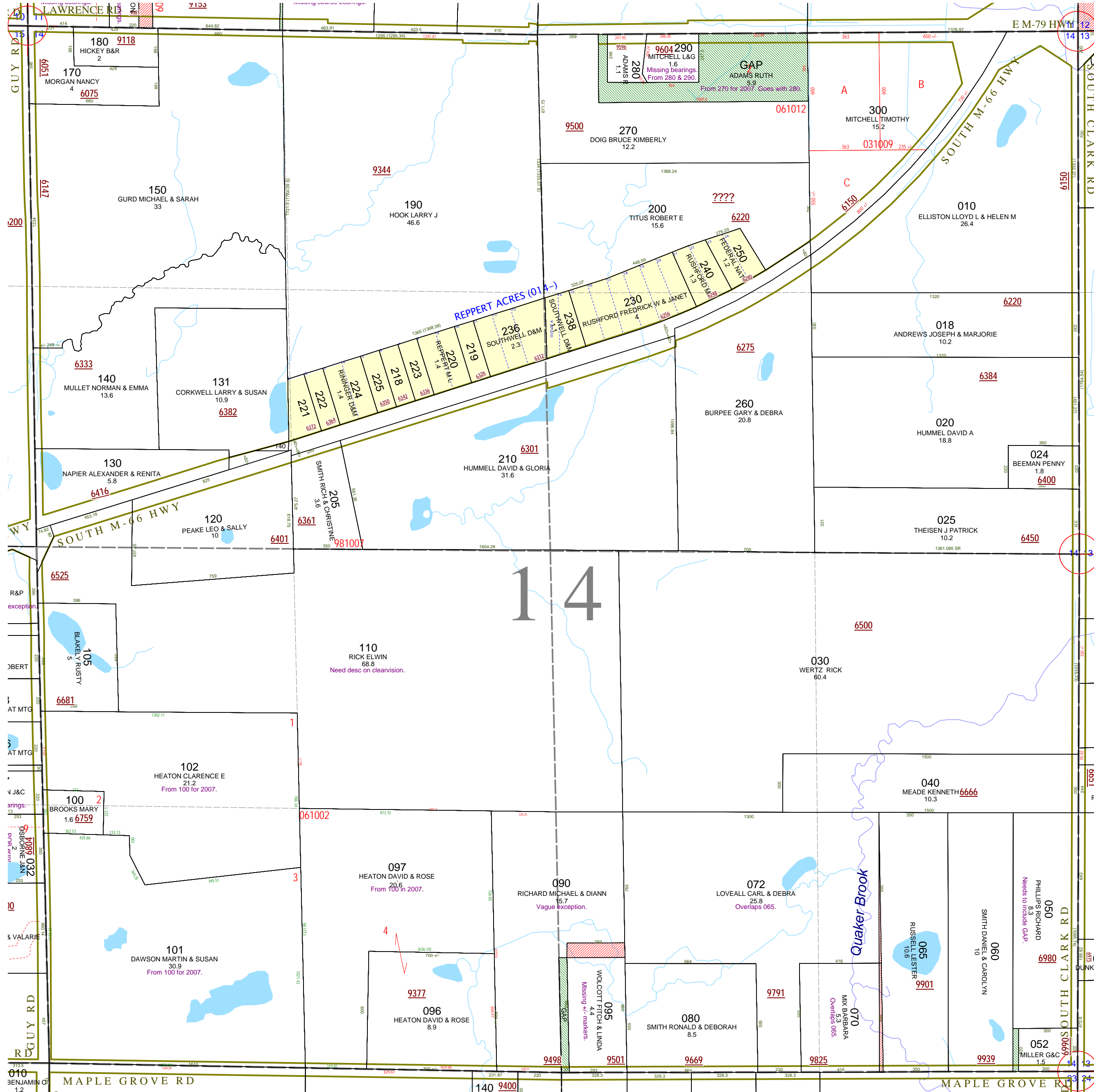
Section 14
08-10-014-
Scale 1"= 400'

This tax map was compiled for tax administration purposes from county and township records. It does not represent a land survey. Barry County Land Information Services 220 West State Street, Hastings MI 49058 (269) 945-1292 or <http://www.barrycounty.org/>



December 1997
Revised February 2000
Revised December 2001
Revised March 2003
Revised June 2004
Revised June 2006
Revised February 2008

All dimensions are from tax roll unless noted below.
D = deeded M or S = surveyed
SR = Surveyor's Record prior to 1915
GLO = Government Land Office circa. 1830



08-10-014-290-00 has incomplete course bearings and should read as surveyed for split #061012

08-10-014-280-00 has incomplete course bearings and needs to include gap parcel as assessed. See Parcel 2 of split #061012.

08-10-014-110-00 needs to write out its clear vision exception.

08-10-014-090-00 overlaps 095 because of vague exception which should match 095 but does not.

08-10-014-072-00 overlaps 065 because it is missing "+/-" markers, correction reads from R#1068463.

08-10-014-050-00 needs to include tiny gap to its south as deeded in L.435-677.

08-10-014-070-00 overlaps 065 because it is missing "+/-" markers.

08-10-014-095-00 both measures of 293 feet should be 293 feet +/-.