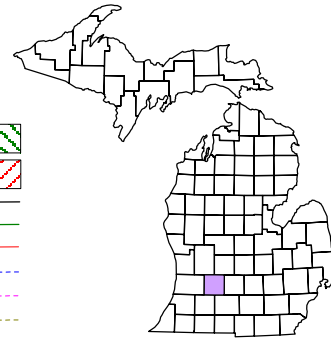


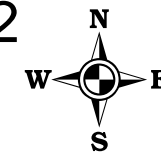
Village of Middleville
T 4 N R 10 W
Barry County
Michigan
Sheet 1

Address 12345
Gap
Overlap
Real Property
Personal Property
Approved Split
Plat
Condominium
Mobile Home Park



6	5	4	3	2	1
7	8	9	10	11	12
18	17	16	15	14	13
19	20	21	22	23	24
30	29	28	27	26	25
31	32	33	34	35	36

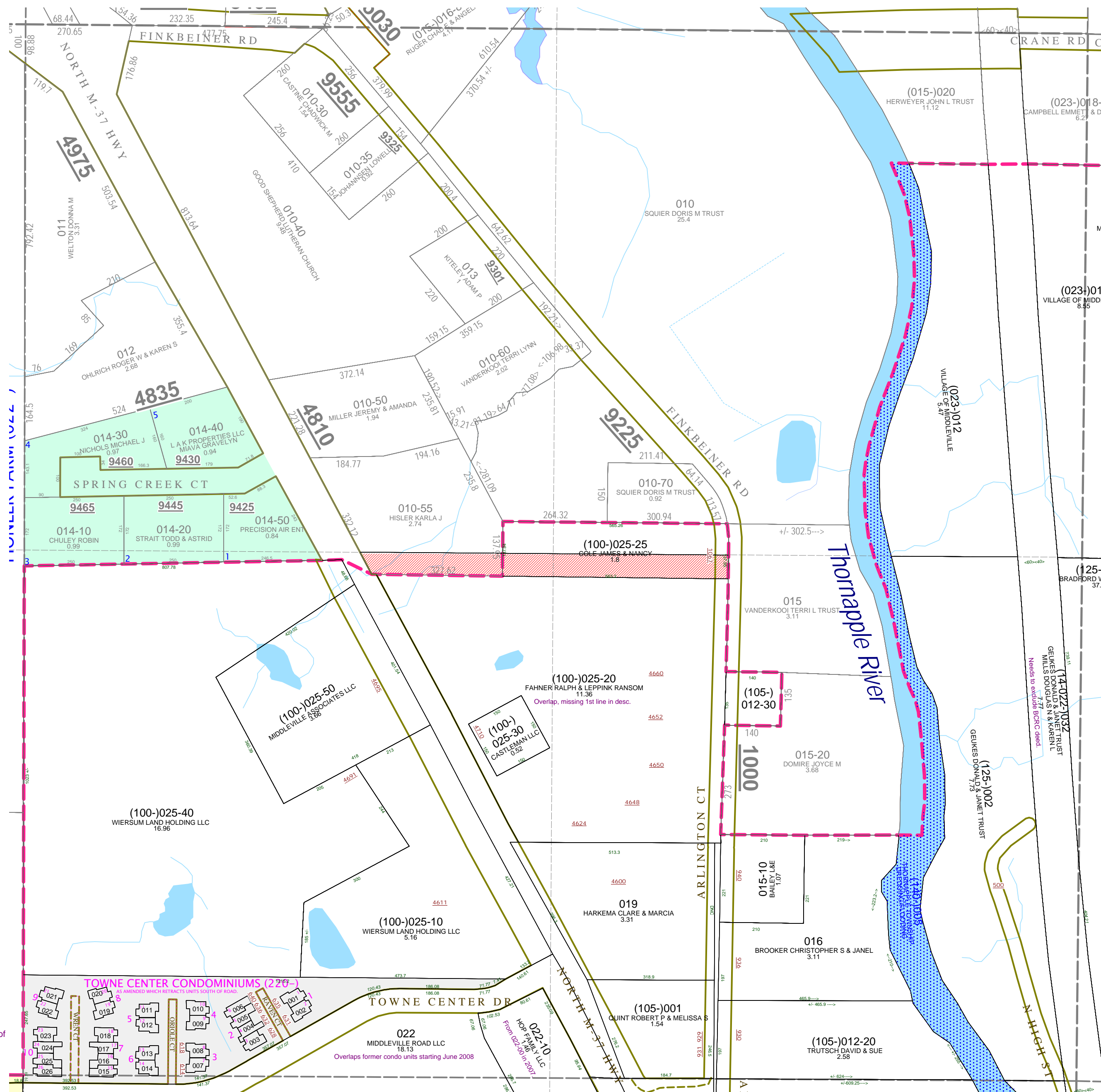
NE 1/4 Section 22
08-41-022-
Scale 1"= 200'



August 1997
Revised April 1999
Revised June 2000
Revised July 2002
Revised May 2003
Revised July 2004
Revised August 2005
Revised December 2006
Revised November 2007
Revised June 2009

This tax map was compiled for tax administration purposes from county and township records. It does not represent a land survey.
Barry County Land Information Services
220 West State Street, Hastings MI 49058
(269) 945-1292 or <http://www.barrycounty.org/>

All dimensions are from tax roll unless noted below.
Dimensions in parentheses are calculated
D = deeded versus M or S = surveyed
SR = Surveyor's Record prior to 1915
GLO = Government Land Office circa. 1830
LCRC = Land Corner Recordation Certificate



08-41-100-025-20 overlaps 025-25 & 08-14-022-010-55 because it is missing a bit from the beginning of the description.

08-14-022-032-00 is part in the Village and part in the Township. The Village of Middleville now has 1/3rd interest in the parcel which they got from D&B less 90ft wide ROW to Crane Rd deeded to Barry County Road Commission in #20090619-0006438 & #200906190006440.

08-41-022-022-00 suddenly included the units of Towne Center Condo lying south of the road when the developer retracted those units from the project in June of 2008.