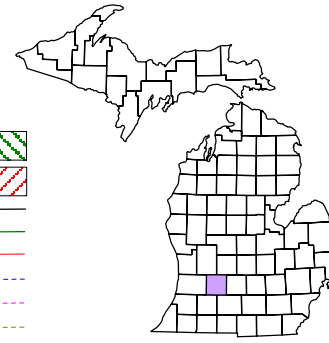


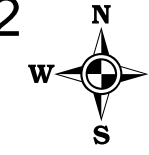
Village of Middleville  
T 4 N R 10 W  
Barry County  
Michigan  
Sheet 4

- Address 12345
- Gap
- Overlap
- Real Property
- Personal Property
- Approved Split
- Plat
- Condominium
- Mobile Home Park



6	5	4	3	2	1
7	8	9	10	11	12
18	17	16	15	14	13
19	20	21	22	23	24
30	29	28	27	26	25
31	32	33	34	35	36

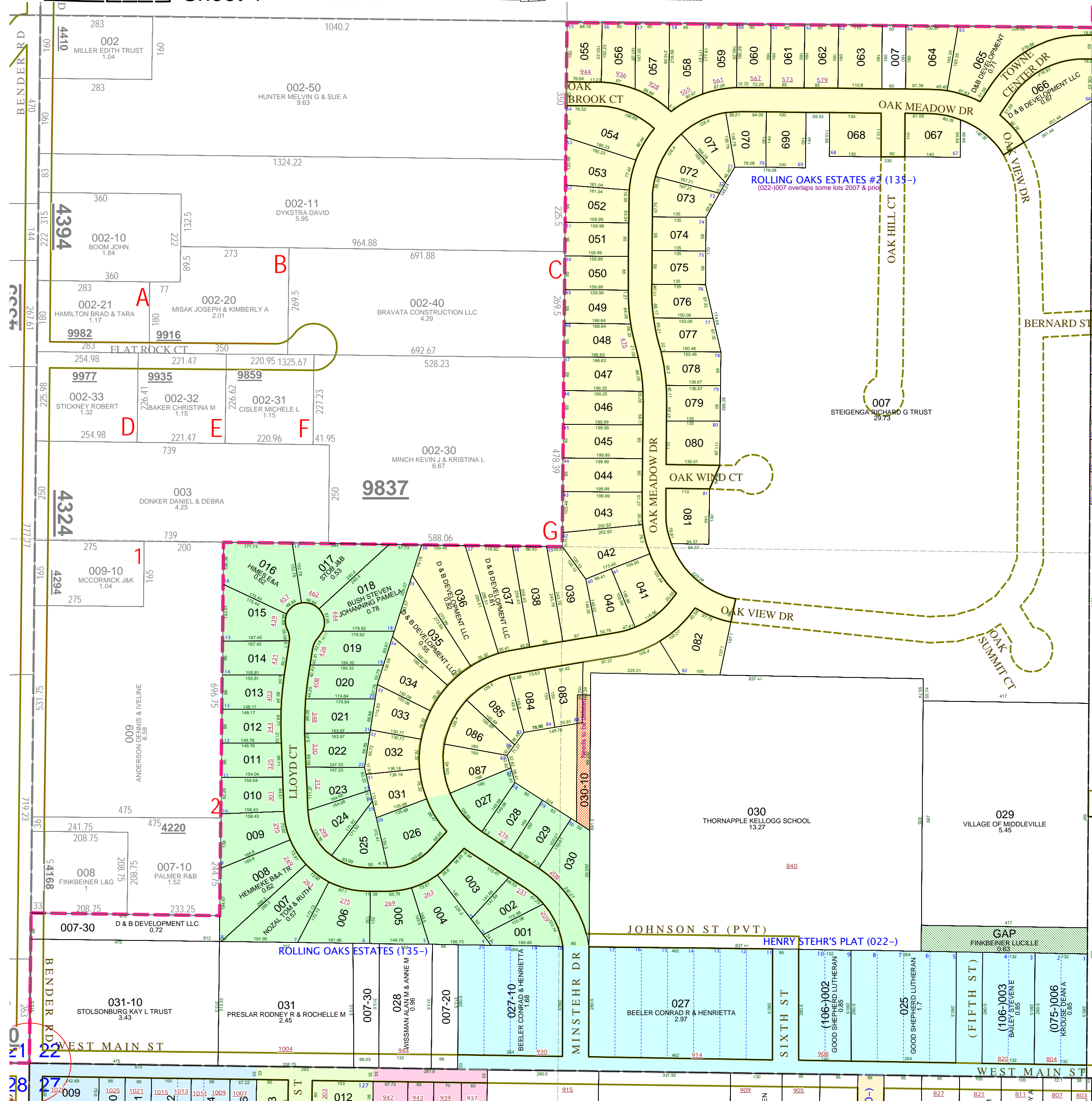
SW 1/4 Section 22  
08-41-022-  
Scale 1" = 200'



August 1997  
Revised April 1999  
Revised June 2000  
Revised July 2002  
Revised May 2003  
Revised July 2004  
Revised August 2005  
Revised December 2006  
Revised November 2007  
Revised June 2009

This tax map was compiled for tax administration purposes from county and township records. It does not represent a land survey.  
Barry County Land Information Services  
220 West State Street, Hastings MI 49058  
(269) 945-1292 or <http://www.barrycounty.org/>

All dimensions are from tax roll unless noted below:  
Dimensions in parentheses are calculated.  
D = deeded versus M or S = surveyed.  
SR = Surveyor's Record prior to 1915  
GLO = Government Land Office circa 1830  
LCRC = Land Corner Recordation Certificate



08-41-022-030-10 needs to be deleted, it has been completely platted over by Rolling Oaks Estates #2.

GAP still owned by Lucille L. Finkbeiner (survivor of Lloyd L. DR L.482-994) in L.397-379 and not sold to D&B Development Co.