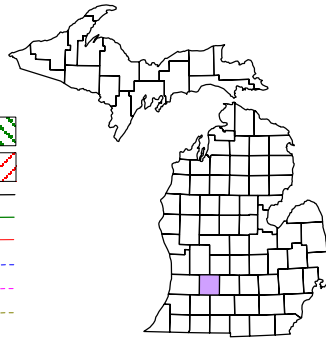


Thornapple Township
T 4 N R 10 W
Barry County
Michigan

- Address 12345
- Gap
- Overlap
- Real Property
- Personal Property
- Approved Split
- Plat
- Condominium
- Mobile Home Park



6	5	4	3	2	1
7	8	9	10	11	12
13	14	15	16	17	18
19	20	21	22	23	24
25	26	27	28	29	30
31	32	33	34	35	36

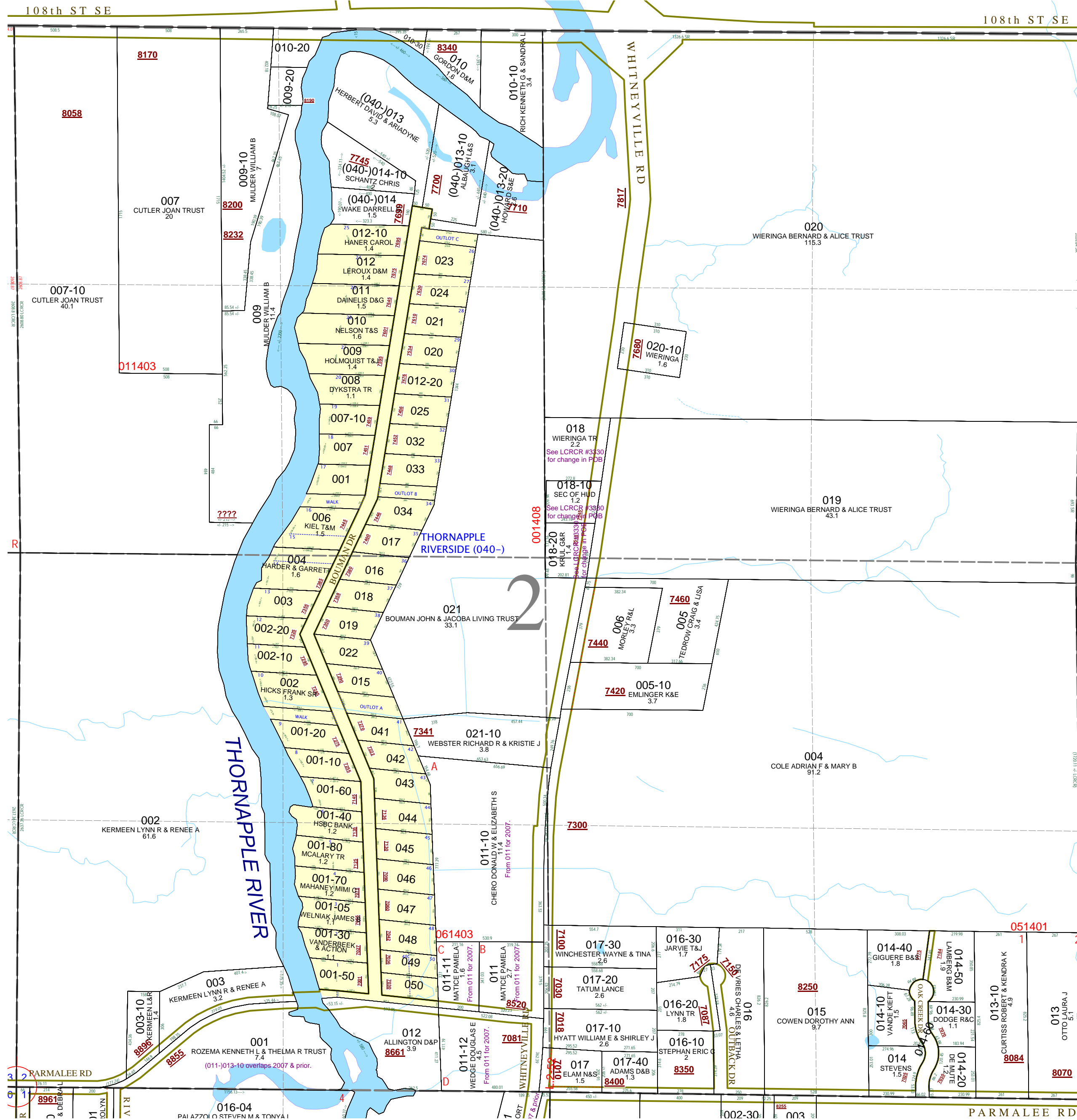
Section 2
08-14-002-
Scale 1" = 400'

This tax map was compiled for tax administration purposes from county and township records. It does not represent a land survey.
Barry County Land Information Services
220 West State Street, Hastings MI 49058
(269) 945-1292 or <http://www.barrycounty.org/>



- June 1996
- Revised July 1997
- Revised March 1999
- Revised June 2000
- Revised July 2002
- Revised May 2004
- Revised August 2005
- Revised December 2006
- Revised December 2007
- Revised July 2009

All dimensions are from tax roll unless noted below:
Dimensions in parentheses are calculated.
D = deeded versus M or S = surveyed
SR = Surveyor's Record prior to 1915
GLO = Government Land Office circa. 1830
LCRC = Land Corner Recordation Certificate



08-14-002-018-00 point of commencement for exception was moved after survey. See LCRCR #3330 for change in N 1/4 post location.

08-14-002-018-10 point of commencement for parcel was moved after survey. See LCRCR #3330 for change in N 1/4 post location.

08-14-002-018-20 point of commencement for parcel was moved after survey. See LCRCR #3330 for change in N 1/4 post location.