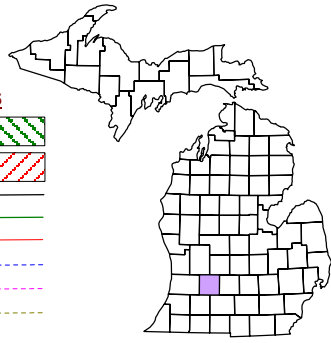


Thornapple Township
T 4 N R 10 W
Barry County
Michigan

- Address 12345
- Gap
- Overlap
- Real Property
- Personal Property
- Approved Split
- Plat
- Condominium
- Mobile Home Park



5	4	3	2	1	
7	8	9	10	11	12
18	17	16	15	14	13
19	20	21	22	23	24
30	29	28	27	26	25
31	32	33	34	35	36

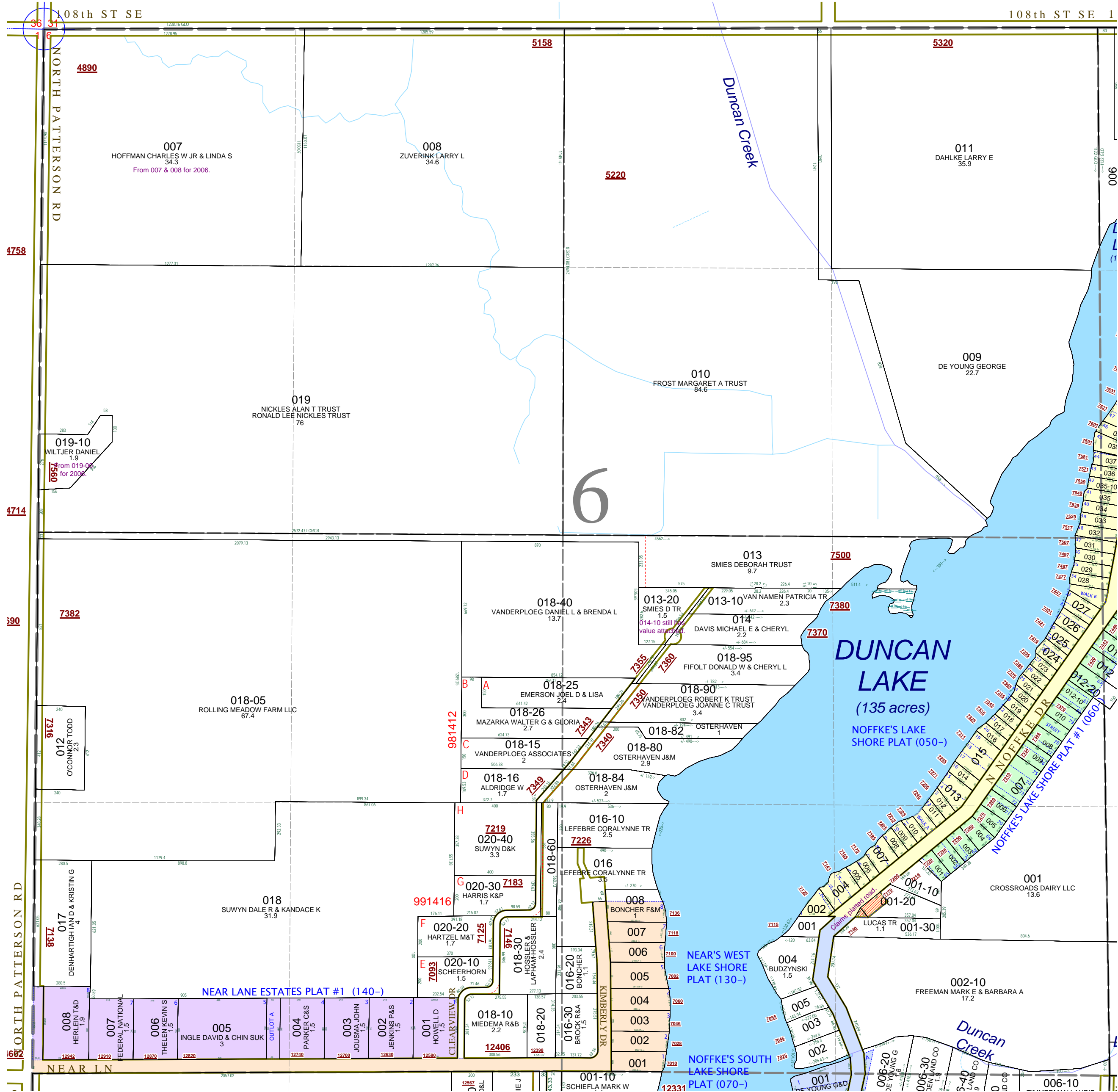
Section 6
08-14-006-
Scale 1" = 400'

This tax map was compiled for tax administration purposes from county and township records. It does not represent a land survey.
 Barry County Land Information Services
 220 West State Street, Hastings MI 49058
 (269) 945-1292 or <http://www.barrycounty.org/>



- June 1996
- Revised July 1997
- Revised March 1999
- Revised June 2000
- Revised July 2002
- Revised May 2004
- Revised July 2004
- Revised August 2005
- Revised December 2006
- Revised December 2007
- Revised July 2009

All dimensions are from tax roll unless noted below:
 Dimensions in parentheses are calculated:
 D = deduced versus M or S = surveyed
 SR = Surveyor's Record prior to 1915
 GLO = Government Land Office circa. 1830
 LCRC = Land Corner Recordation Certificate



08-14-006-014-10 was supposedly combined into 013-20, but there still is a value attached.

08-14-006-001-20 claims part of plat which has not been vacated.

08-14-006-001-30 claims part of plat which has not been vacated.