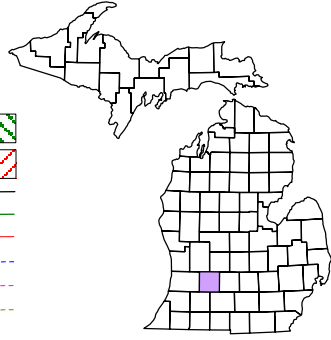


Thornapple Township T 4 N R 10 W Barry County Michigan

- Address 12345
- Gap
- Overlap
- Real Property
- Personal Property
- Approved Split
- Plat
- Condominium
- Mobile Home Park



| | | | | | |
|----|----|----|----|----|----|
| 6 | 5 | 4 | 3 | 2 | 1 |
| 8 | 8 | 9 | 10 | 11 | 12 |
| 18 | 17 | 16 | 15 | 14 | 13 |
| 19 | 20 | 21 | 22 | 23 | 24 |
| 30 | 29 | 28 | 27 | 26 | 25 |
| 31 | 32 | 33 | 34 | 35 | 36 |

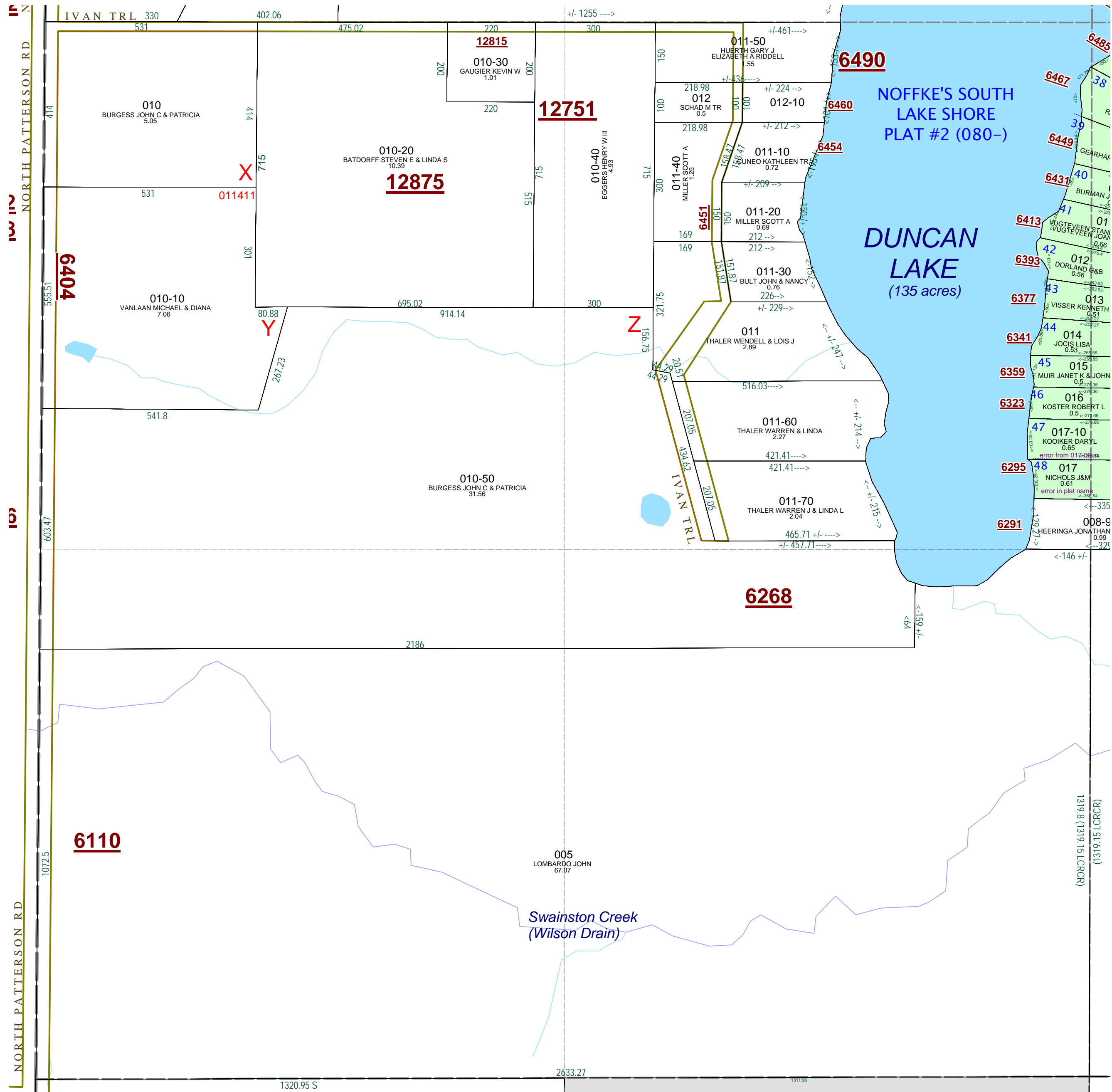
SW 1/4 Section 7
08-14-007-
Scale 1" = 200'



July 2002
Revised July 2004
Revised August 2005
Revised December 2006
Revised November 2007
Revised July 2009

This tax map was compiled for tax administration purposes from county and township records. It does not represent a land survey.
Barry County Land Information Services
220 West State Street, Hastings MI 49058
(269) 945-1292 or <http://www.barrycounty.org/>

All dimensions are from tax roll unless noted below:
Dimensions in parentheses are calculated:
D = deduced versus M or S = surveyed
SR = Surveyor's Record prior to 1915
GLO = Government Land Office circa. 1830
LCRC = Land Corner Recordation Certificate



08-14-080-017-10 plat name is incomplete.
08-14-080-017-00 plat name is incomplete.