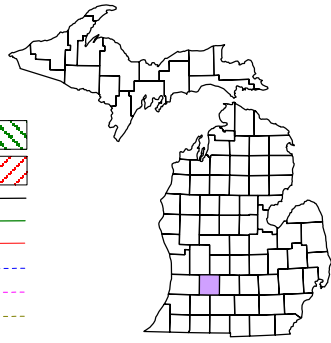


Thornapple Township  
T 4 N R 10 W  
Barry County  
Michigan

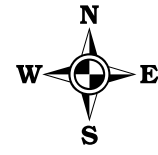
- Address 12345
- Gap
- Overlap
- Real Property
- Personal Property
- Approved Split
- Plat
- Condominium
- Mobile Home Park



6	5	4	3	2	1
7	8	9	10	11	12
13	14	15	16	17	18
19	20	21	22	23	24
25	26	27	28	29	30
31	32	33	34	35	36

Section 8  
08-14-008-  
Scale 1" = 400'

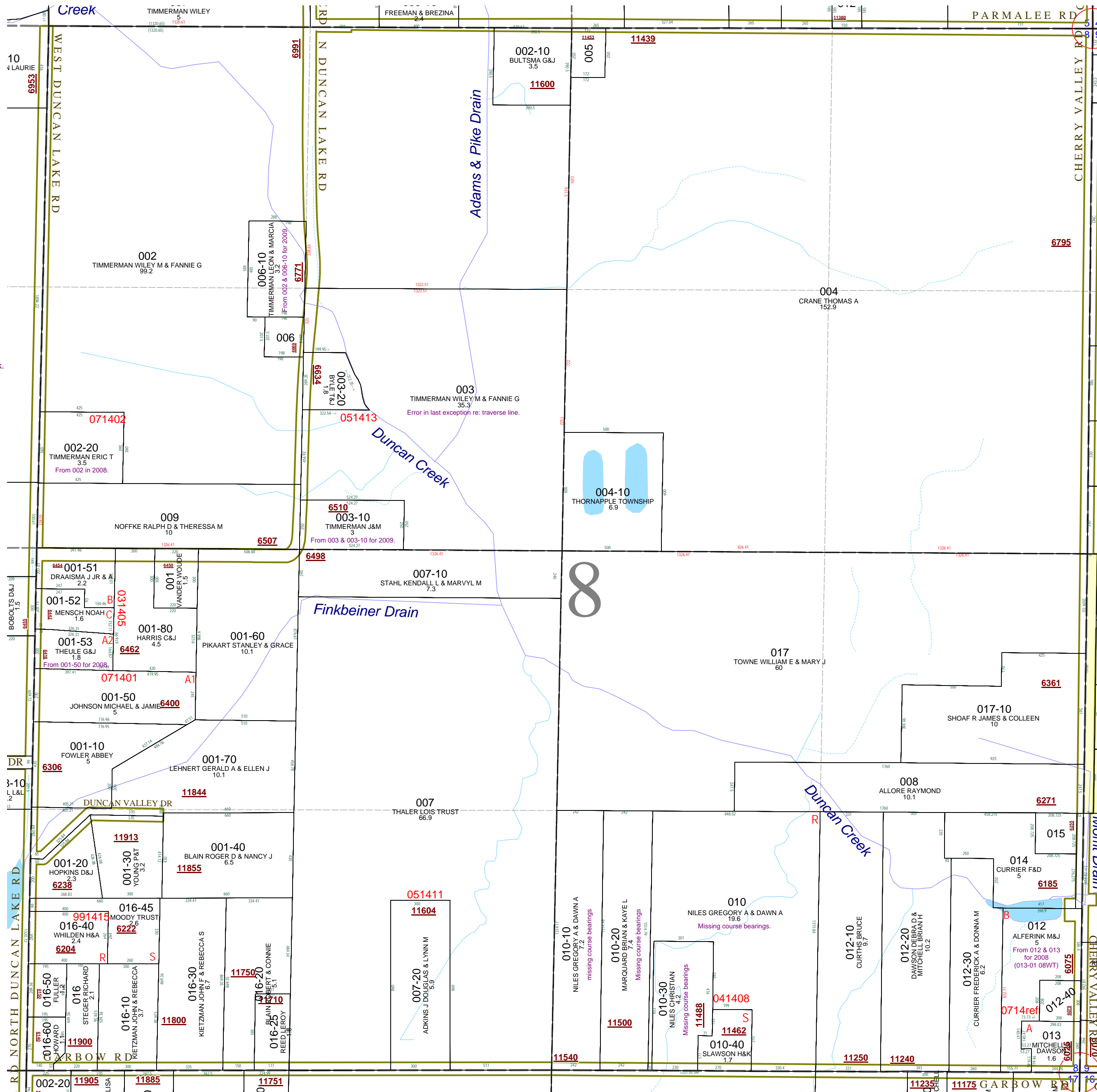
This tax map was compiled for tax administration purposes from county and township records. It does not represent a land survey.  
Barry County Land Information Services  
220 West State Street, Hastings MI 49058  
(269) 945-1292 or <http://www.barrycounty.org/>



- May 1996
- Revised July 1997
- Revised March 1999
- Revised June 2000
- Revised May 2002
- Revised July 2003
- Revised July 2004
- Revised August 2005
- Revised December 2006
- Revised December 2007
- Revised July 2009

All dimensions are from tax roll unless noted below:  
Dimensions in parentheses are calculated:  
D = deduced versus M or S = surveyed  
SR = Surveyor's Record prior to 1915  
GLO = Government Land Office circa 1830  
LCRC = Land Corner Recordation Certificate

08-14-008-003-00 is confusing as to who has the land between the traverse line and the creek. See split #051413 for correction.



08-14-008-010-10 is missing its course bearings. See L.620-258.  
08-14-008-010-20 is missing its course bearings. See R#1090439.  
08-14-008-010-30 is missing its course bearings. See R#1068809.  
08-14-008-012-00 the measure of 73.73 +/- is surveyed at 90.03 feet and 832.7 feet was surveyed at 832.71 feet.