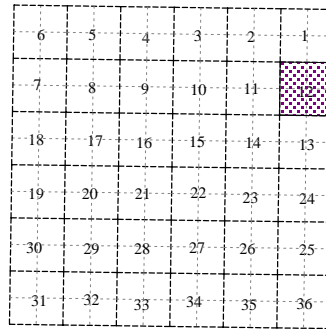
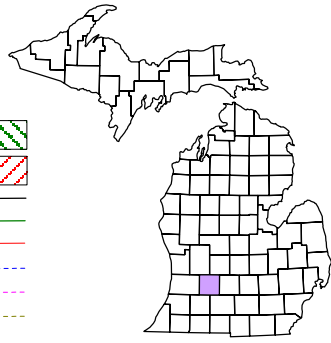
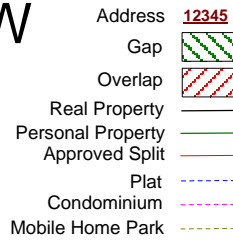
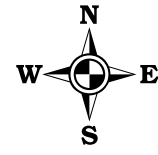


# Thornapple Township T 4 N R 10 W Barry County Michigan



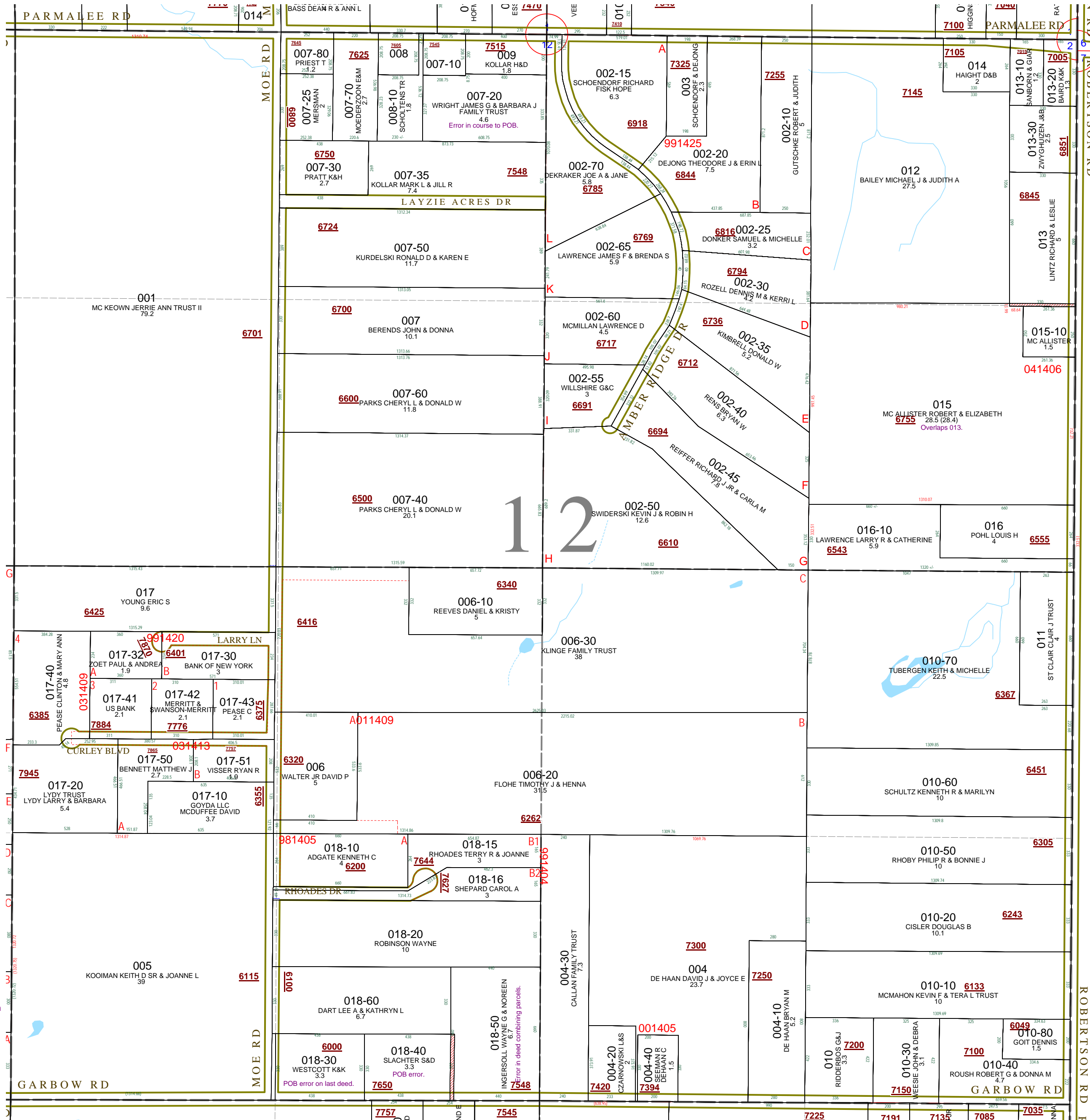
## Section 12 08-14-012- Scale 1" = 400'



May 1996  
Revised August 1997  
Revised April 1999  
Revised June 2000  
Revised July 2002  
Revised May 2003  
Revised July 2004  
Revised August 2005  
Revised December 2006  
Revised December 2007  
Revised July 2009

This tax map was compiled for tax administration purposes from county and township records. It does not represent a land survey.  
Barry County Land Information Services  
220 West State Street, Hastings MI 49058  
(269) 945-1292 or <http://www.barrycounty.org/>

All dimensions are from tax roll unless noted below:  
Dimensions in parentheses are calculated:  
D = deeded versus M or S = surveyed  
SR = Surveyor's Record prior to 1915  
GLO = Government Land Office circa. 1830  
LCRC = Land Corner Recordation Certificate



08-14-012-015-00 overlaps 013-00 as written. It has been surveyed for split #041406.

08-14-012-018-30 was surveyed for original partition. This survey is better than the current deed which was degraded by a family quit claim that rounded off values.

08-14-012-018-40 was surveyed for original partition, and should be described as L.1-399 & L.416-67.

08-14-012-018-50 has an error in the original deed L.428-149 with L.378-203 & L.385-809.