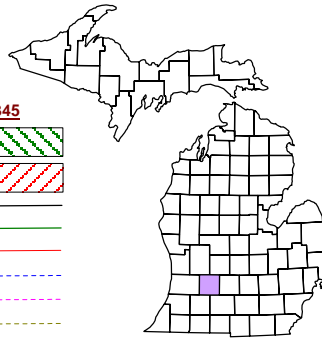


Thornapple Township
T 4 N R 10 W
Barry County
Michigan

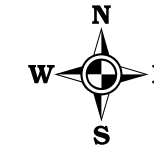
- Address 12345
- Gap
- Overlap
- Real Property
- Personal Property
- Approved Split
- Plat
- Condominium
- Mobile Home Park



6	5	4	3	2	1
7	8	9	10	11	12
18	17	16	15	14	13
30	29	28	27	26	25
31	32	33	34	35	36

Section 19
08-14-019-
Scale 1" = 400'

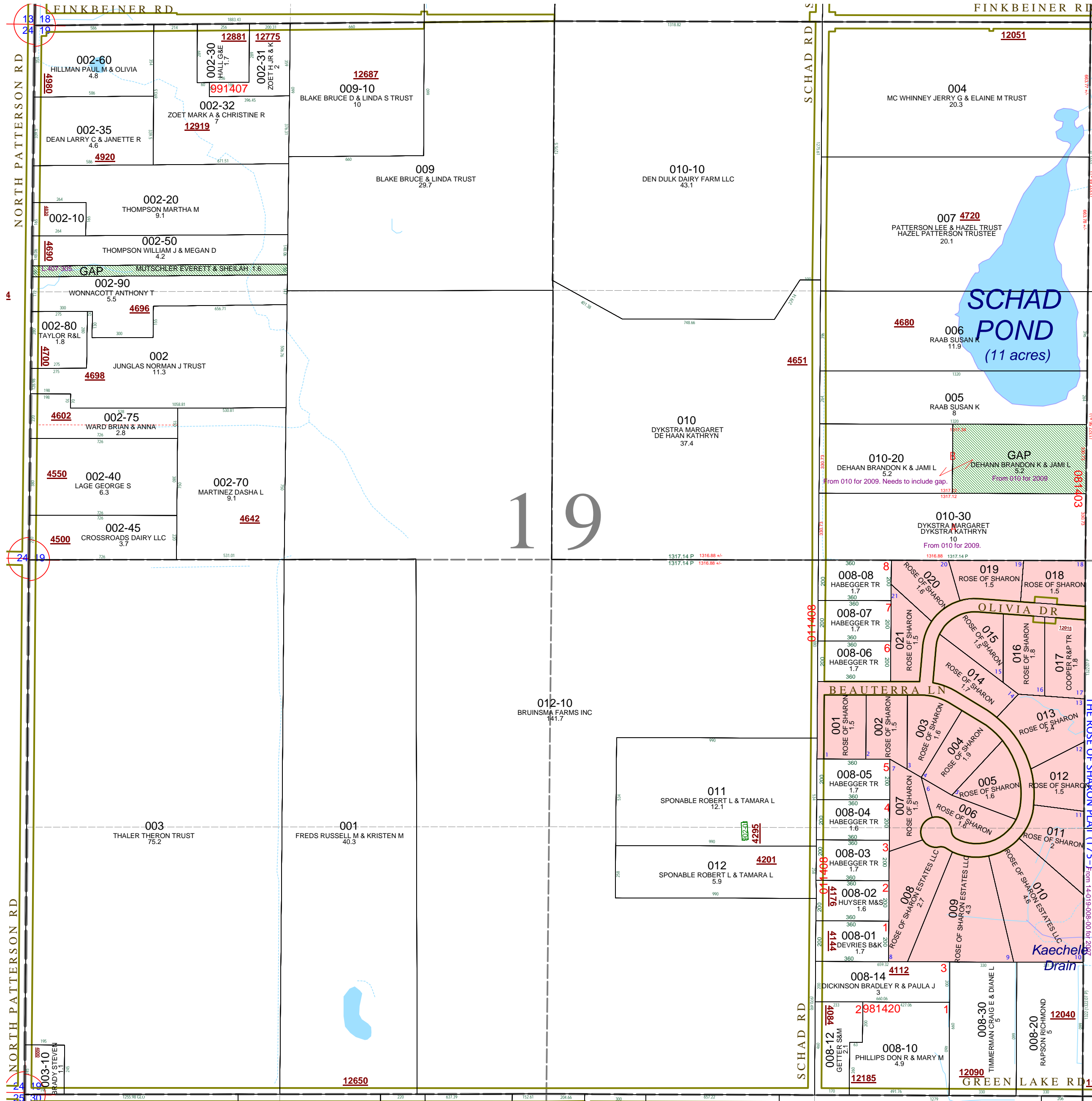
This tax map was compiled for tax administration purposes from county and township records. It does not represent a land survey.
Barry County Land Information Services
220 West State Street, Hastings MI 49058
(269) 945-1292 or <http://www.barrycounty.org/>



- May 1996
- Revised August 1997
- Revised April 1999
- Revised June 2000
- Revised July 2002
- Revised May 2003
- Revised July 2004
- Revised August 2005
- Revised December 2006
- Revised December 2007
- Revised July 2009

All dimensions are from tax roll unless noted below:
Dimensions in parentheses are calculated
D = deeded versus M or S = surveyed
SR = Surveyor's Record prior to 1915
GLO = Government Land Office circa. 1830
LCRC = Land Corner Recordation Certificate

GAP owned by Everett & Sheilah Mutschler in L.407-305 not sold onto Thompson in R#1081234.



08-14-019-010-20 needs to include gap parcel to its east as surveyed in split #081403.