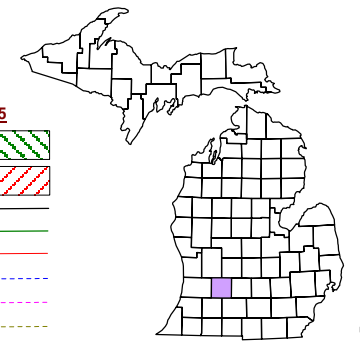


Thornapple Township
T 4 N R 10 W
Barry County
Michigan

- Address 12345
- Gap / / / /
- Overlap / / / /
- Real Property / / / /
- Personal Property / / / /
- Approved Split / / / /
- Plat / / / /
- Condominium / / / /
- Mobile Home Park / / / /



6	5	4	3	2	1
7	8	9	10	11	12
13	14	15	16	17	18
19	20	21	22	23	24
25	26	27	28	29	30
31	32	33	34	35	36

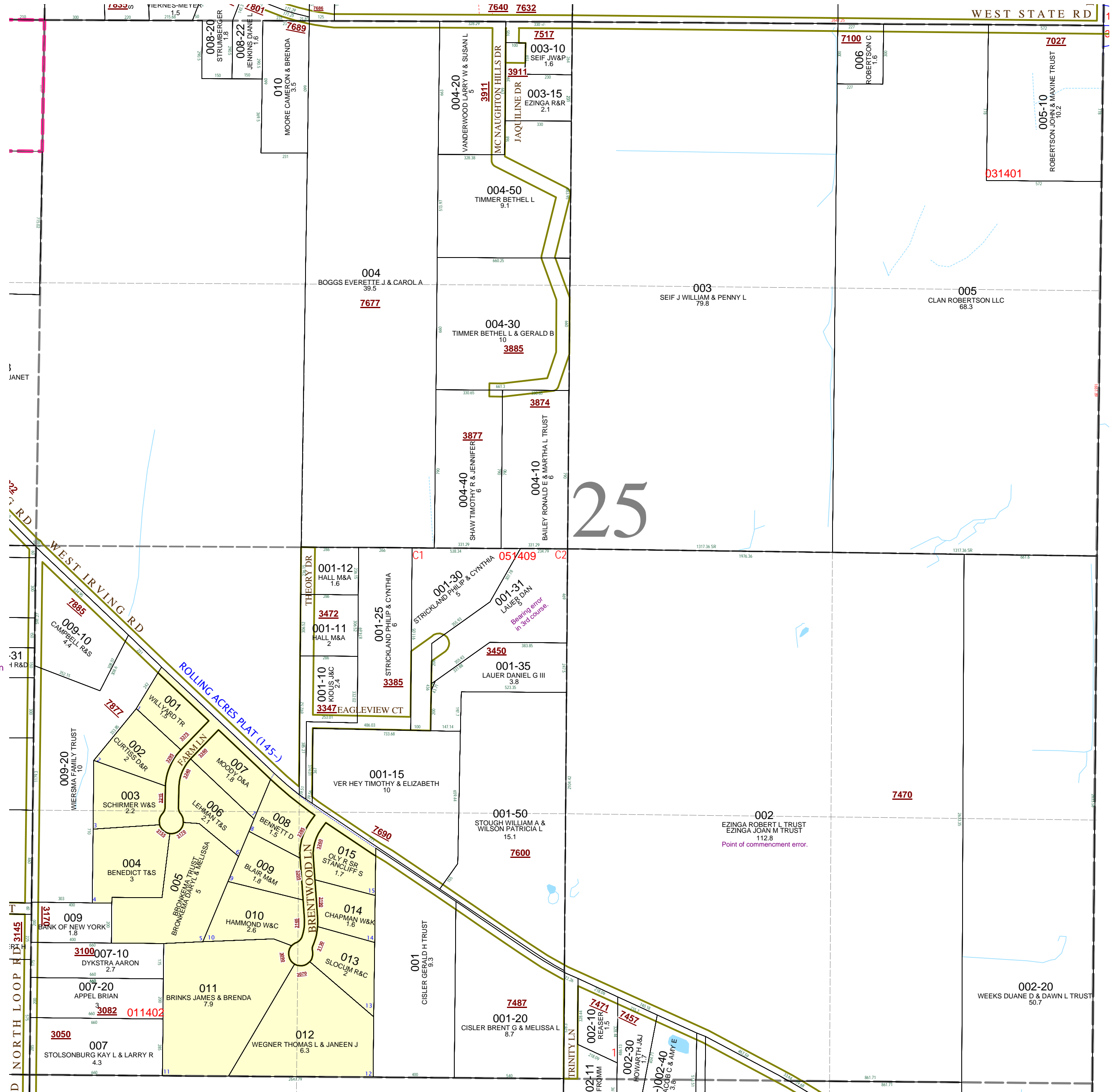
Section 25
08-14-025-
Scale 1" = 400'



May 1996
 Revised August 1997
 Revised April 1999
 Revised June 2000
 Revised July 2002
 Revised May 2003
 Revised July 2004
 Revised August 2005
 Revised December 2006
 Revised December 2007
 Revised August 2009

This tax map was compiled for tax administration purposes from county and township records. It does not represent a land survey.
 Barry County Land Information Services
 220 West State Street, Hastings MI 49058
 (269) 945-1292 or <http://www.barrycounty.org/>

All dimensions are from tax roll unless noted below:
 Dimensions in parentheses are calculated.
 D = deeded versus M or S = surveyed
 SR = Surveyor's Record prior to 1915
 GLO = Government Land Office circa. 1830
 LCRC = Land Corner Recordation Certificate



08-14-025-001-31 has a bearing error change "TH S 54°22'31" E" to "TH S 54°22'31" W".

GAP owned by Everett J. & Maria E. Bieber in L.596-227 and not sold on to Buelow in L.682-200, L.695-462 or Kay-D Development in R#1152701.

08-14-025-002-00 has a point of commencement error (should be the SE corner)