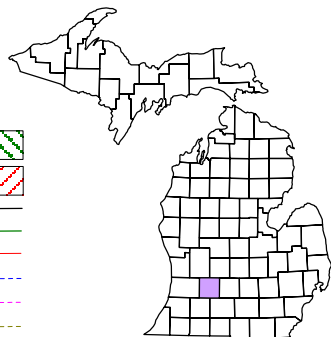


Thornapple Township
T 4 N R 10 W
Barry County
Michigan

- Address 12345
- Gap
- Overlap
- Real Property
- Personal Property
- Approved Split
- Plat
- Condominium
- Mobile Home Park



6	5	4	3	2	1
7	8	9	10	11	12
18	17	16	15	14	13
19	20	21	22	23	24
30	29	28	27	26	25
31	32	33	34	35	36

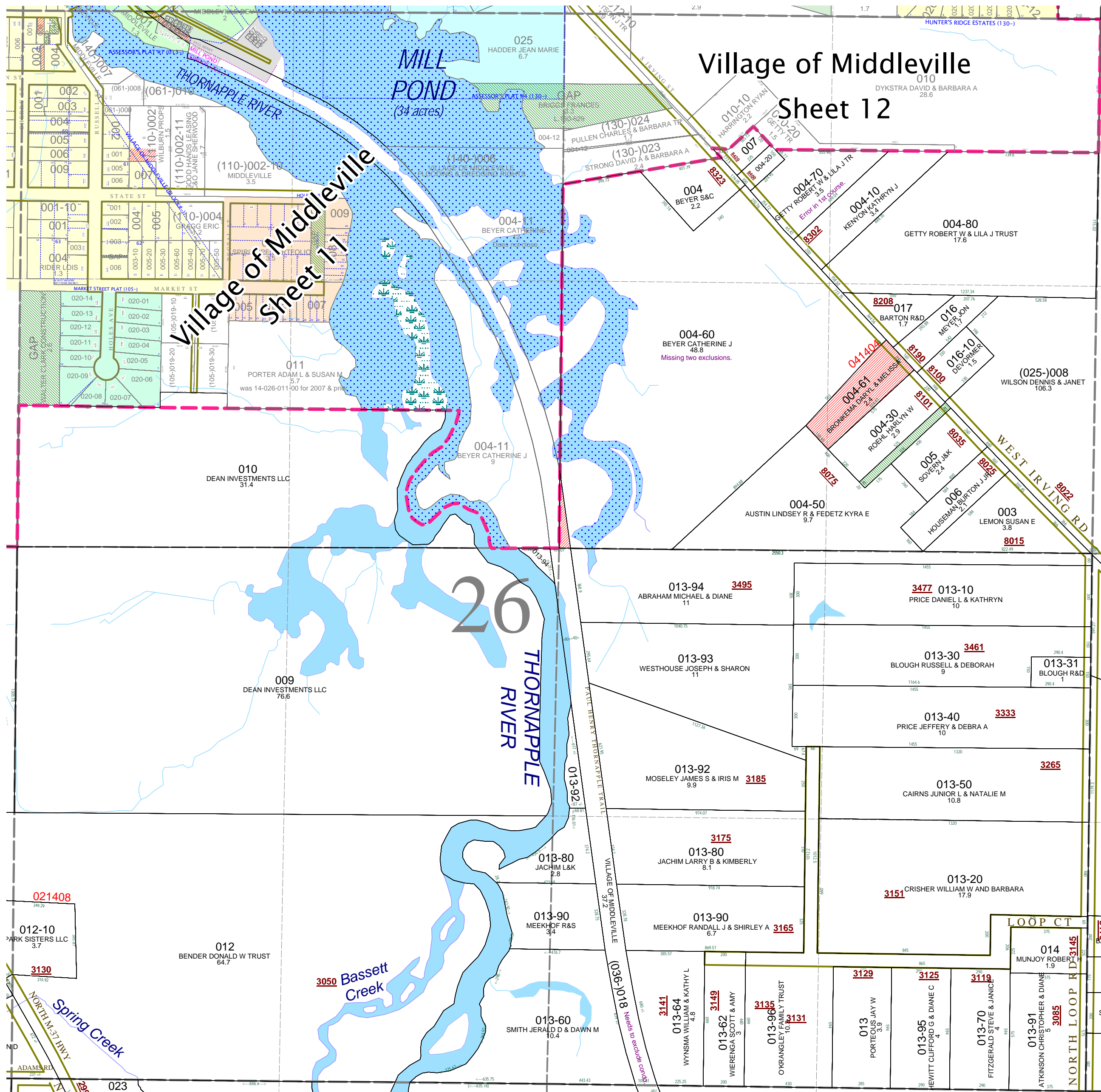
Section 26
08-14-026-
Scale 1" = 400'



- May 1996
- Revised August 1997
- Revised April 1999
- Revised June 2000
- Revised July 2002
- Revised May 2003
- Revised July 2004
- Revised August 2005
- Revised December 2006
- Revised December 2007
- Revised July 2009

This tax map was compiled for tax administration purposes from county and township records. It does not represent a land survey.
 Barry County Land Information Services
 220 West State Street, Hastings MI 49058
 (269) 945-1292 or <http://www.barrycounty.org/>

All dimensions are from tax roll unless noted below:
 Dimensions in parentheses are calculated
 D = deeded versus M or S = surveyed
 SR = Surveyor's Record prior to 1915
 GLO = Government Land Office circa. 1830
 LCRC = Land Corner Recordation Certificate



08-14-026-007-00 has a tiny error, change "N 1/2 N 1/2 NE 1/4" to "N 1/2 NE 1/4" because it leaves that half-half-quarter section.

08-14-026-004-70 has a missing direction in the first course, change "TH 46 DEG 20'14" W 2.82 FT" to "TH S46°20'14"W 2.82FT"

08-14-026-004-60 overlaps 14-036-018-00 and does not exclude split to 004-61.

GAP between 004-30 & 005 owned by William Getty 1/3 interest (deceased, Hasting City Bank as personal rep), Robert Getty 1/3 interest & Colleen Cox 1/3 interest by virtue of Order Assigned Residue in L.663-893 out of the estate of Lucille Getty.

08-14-036-018-00 overlaps Mill Pond Condo and needs to exclude parcel deeded to Middleville Development Co.